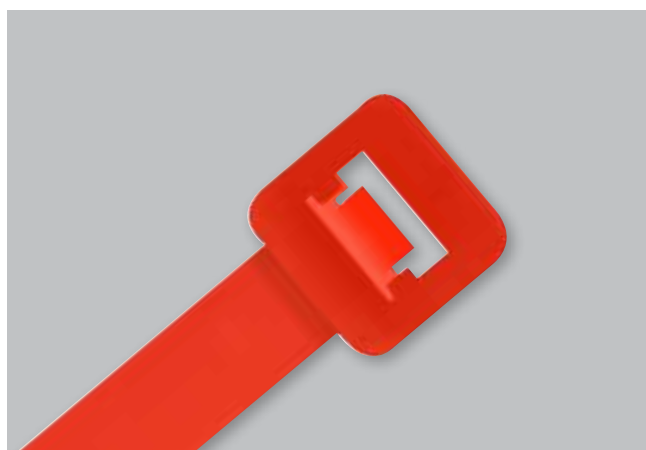




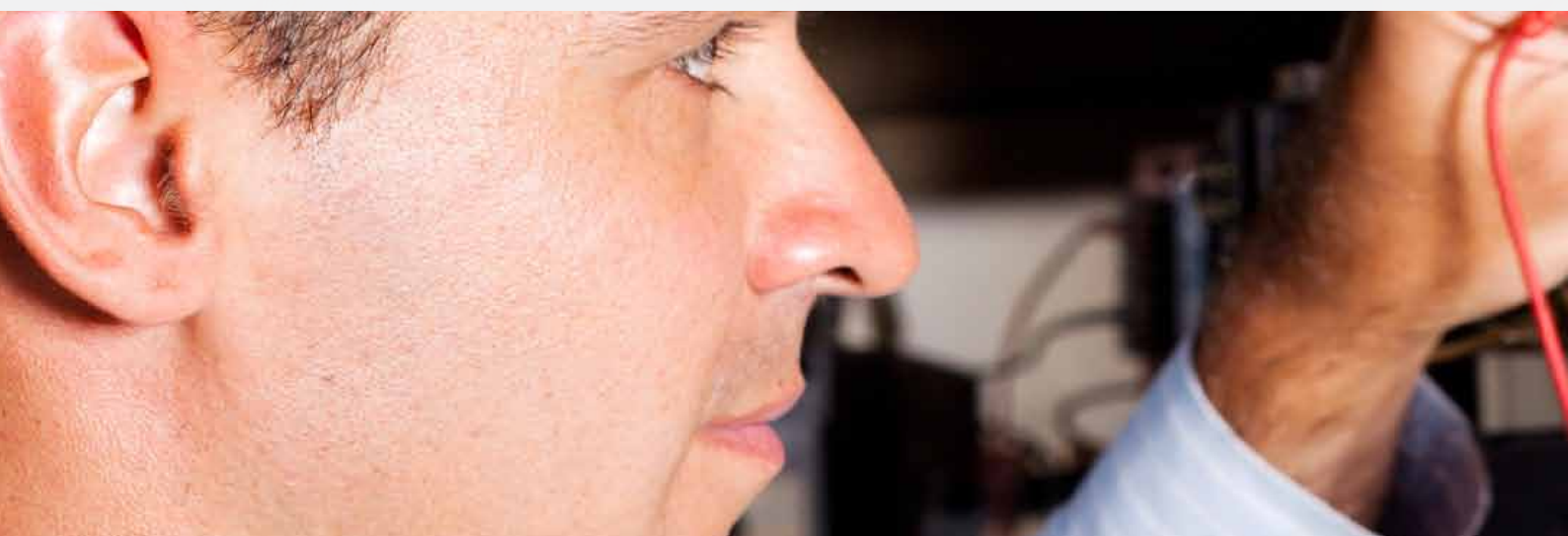
UNICRIMP

Electrical Accessories Catalogue

www.unicrimp.com



Welcome to UNICRIMP



...a comprehensive range of cable accessories.

Unicrimp is the latest new business to emerge from the successful Scolmore Group of companies. Its formation brings to the electrical contracting industry a comprehensive range of cable accessory products.

Launched under the Qcrimp brand name and available exclusively through the electrical wholesale trade, the product offering comprises an extensive range of cable management consumables.

All products within the Qcrimp range are manufactured under stringent quality control systems and are fully compliant with the very latest industry regulations.

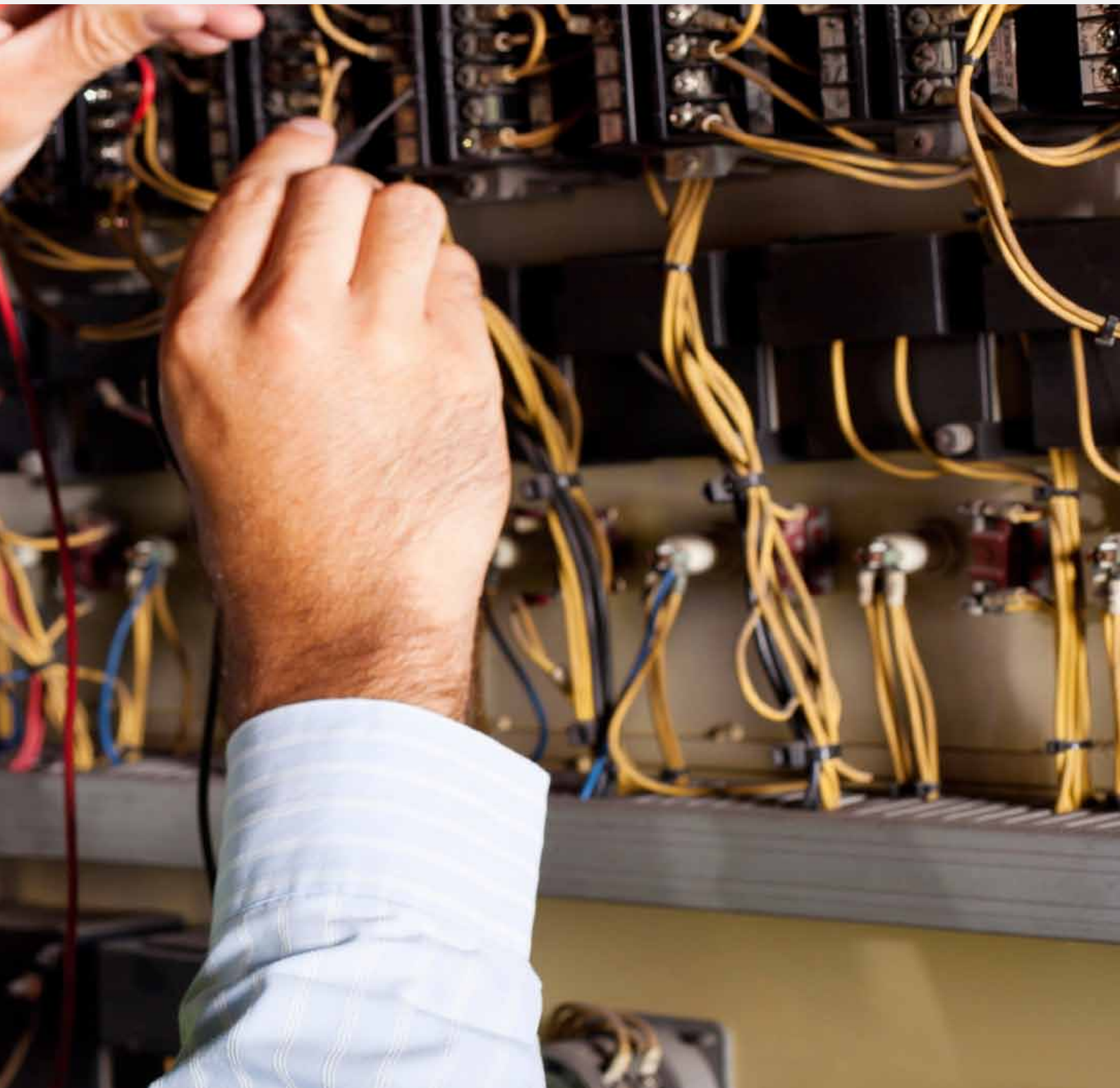
The range includes cable ties, crimp terminals, PVC tape, copper tube terminals, cable clips, and brass and nylon glands – providing everything required to harness cable between the consumer unit and the end accessory.

Aligned with the core values of the Scolmore group of companies, Unicrimp will offer the same levels of outstanding customer service, high quality products and commitment to new product development.

Located close to the Group Headquarters in the Midlands, the new Unicrimp distribution centre is ideally located to supply to all areas of the UK.

Email: sales@unicrimp.com **Visit:** www.unicrimp.com

Call: 01827 300600 **Fax:** 01827 300620



05

Pre-Insulated Terminals

Rings, push-ons, spades, blades, butts, pins, heat shrink butts, bullets, available in red, blue & yellow



09

Copper Tube Terminals

Available in a range of sizes with bell mouth cable entry



11

Nylon Cable Ties

Unicrimp Cable Ties are produced on multi impression tools which mould complete, one piece ties with no metal parts and are available in a variety of sizes and colours



14

Stainless Steel Cable Ties

Available in a range of sizes and made to the highest of quality



15

Cable Tie Accessories

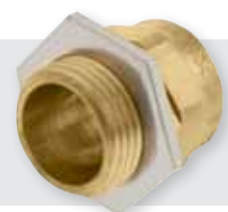
Eyelets, cradles, 2-way cable tie bases, mounts, earth sleeving



18

BW Brass Cable Glands

BW industrial brass glands in a variety of sizes



19

CW Brass Cable Glands

CW industrial brass glands in a variety of sizes





Nylon Cable Glands

IP68 nylon glands available in a range of sizes and made to the highest of quality

20



Accessories

Quick fit grommets, standard grommets, earth clamps & terminal blocks

21



PVC Insulating Tapes

General purpose non-migratory plasticised insulation tape supplied in lengths of 20m and 33m with all colours as detailed

22



Cable Clips & Cleats

Available in a range of colours and sizes

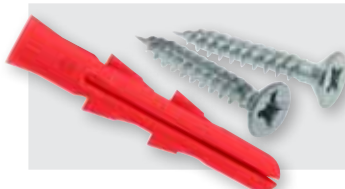
23



Lock-Off Kits

Available in 2 different kits

24



Fixings

Tradesman tubs, wall plugs, fixings, bolts, screws, toggles & nuts/washers

25



Tools

Ratchets, crimpers, cutters, strippers and tensioning tools

29



Ring



Part Number	Stud Size	Pack Qty
QRR3	3mm	100
QRR37	3.7mm	100
QRR4	4mm	100
QRR5	5mm	100
QRR6	6mm	100
QRR8	8mm	100
QRR10	10mm	100
QRR12	12mm	100

Cable size range: 0.5-1.5mm sq.
Current rating (max): 19A Voltage (max): 600V

Male Push-on



Part Number	Tab Size mm	Pack Qty
QRPO28M5	2.8mm X 0.5mm	100
QRPO28M8	2.8mm X 0.8mm	100
QRPO48M5	4.8mm X 0.5mm	100
QRPO48M8	4.8mm X 0.8mm	100
QRPO63M	6.3mm X 0.8mm	100

Cable size range: 0.5-1.5mm sq.
Current rating (max): 10A Voltage (max): 300V

Female Push-on



Part Number	Tab Size mm	Pack Qty
QRPO28F5	2.8mm X 0.5mm	100
QRPO28F8	2.8mm X 0.8mm	100
QRPO48F5	4.8mm X 0.5mm	100
QRPO48F8	4.8mm X 0.8mm	100
QRPO63F	6.3mm X 0.8mm	100

Cable size range: 0.5-1.5mm sq.
Current rating (max): 10A Voltage (max): 300V

Butt



Part Number	Pack Qty
QRB	100

Cable size range: 0.5-1.5mm sq.
Current rating (max): 10A Voltage (max): 300V

Push-on Connector



Part Number	Tab Size mm	Pack Qty
QRPOA63	6.3mm	100

Cable size range: 0.5-1.5mm sq.
Current rating (max): 10A Voltage (max): 300V

Pin



Part Number	Dia x Length mm	Pack Qty
QRP12	1.9mm X 12mm	100

Cable size range: 0.5-1.5mm sq.
Current rating (max): 19A Voltage (max): 600V



Spade



Part Number	Stud Size	Pack Qty
QRF3	3mm	100
QRF3N	3.5mm	100
QRF4N	4mm	100
QRF5	5mm	100
QRF6	6mm	100

Cable size range: 0.5-1.5mm sq.
Current rating (max): 19A Voltage (max): 600V

Female Push-on Fully Insulated



Part Number	Tab Size mm	Pack Qty
QRFPO28F5	2.8mm & 0.5mm	100
QRFPO28F8	2.8mm & 0.8mm	100
QRFPO48F5	4.8mm & 0.5mm	100
QRFPO48F8	4.8mm & 0.8mm	100
QRFPO63F	6.3mm & 0.8mm	100

Cable size range: 0.5-1.5mm sq.
Current rating (max): 10A Voltage (max): 300V

Blade



Part Number	Dia x Length mm	Pack Qty
QRBL10	2.3mm X 10.4mm	100
QRBL14	2.3mm X 14.4mm	100
QRBL18	2.3mm X 18.4mm	100

Cable size range: 0.5-1.5mm sq.
Current rating (max): 19A Voltage (max): 600V

Heat Shrink Butt



Part Number	Pack Qty
QHSB1	100

Cable size range: 0.5mm-1.5mm sq.
Current rating (max): 19A Voltage (max): 600V

Male Bullet



Part Number	Bullet Dia mm	Pack Qty
QRAB4M	4mm	100

Cable size range: 0.5-1.5mm sq.
Current rating (max): 10A Voltage (max): 300V

Female Bullet



Part Number	Bullet Dia mm	Pack Qty
QRAB4F	4mm	100

Cable size range: 0.5-1.5mm sq.
Current rating (max): 10A Voltage (max): 300V

Ring



Part Number	Stud Size	Pack Qty
QBR3	3mm	100
QBR37	3.7mm	100
QBR4	4mm	100
QBR5	5mm	100
QBR6	6mm	100
QBR8	8mm	100
QBR10	10mm	100
QBR12	12mm	100

Cable size range: 1.5-2.5mm sq.
Current rating (max): 27A Voltage (max): 600V

Male Push-on



Part Number	Tab Size mm	Pack Qty
QBPO48M5	4.8mm X 0.5mm	100
QBPO48M8	4.8mm X 0.8mm	100
QBPO63M	6.3mm X 0.8mm	100

Cable size range: 1.5-2.5mm sq.
Current rating (max): 15A Voltage (max): 300V

Female Push-on



Part Number	Tab Size mm	Pack Qty
QBPO48F5	4.8mm X 0.5mm	100
QBPO48F8	4.8mm X 0.8mm	100
QBPO63F	6.3mm X 0.8mm	100
QBPO85F	8.5mm X 0.8mm	100

Cable size range: 1.5-2.5mm sq.
Current rating (max): 15A Voltage (max): 300V

Spade



Part Number	Stud Size	Pack Qty
QBF3	3mm	100
QBF3N	3.5mm	100
QBF4N	4mm	100
QBF5	5mm	100
QBF6	6mm	100

Cable size range: 1.5-2.5mm sq.
Current rating (max): 27A Voltage (max): 600V

Female Push-on Fully Insulated



Part Number	Tab Size mm	Pack Qty
QBFPO48F5	4.8mm & 5mm	100
QBFPO48F8	4.8mm & 8mm	100
QBFPO63F	6.3mm & 8mm	100

Cable size range: 1.5-2.5mm sq.
Current rating (max): 15A Voltage (max): 300V

Blade



Part Number	Dia x Length mm	Pack Qty
QBBL9	2.8mm X 9mm	100
QBBL18	2.3mm X 18.4mm	100

Cable size range: 1.5-2.5mm sq.
Current rating (max): 27A Voltage (max): 600V

Butt



Part Number	Pack Qty
QBB	100

Cable size range: 1.5-2.5mm sq.
Current rating (max): 15A Voltage (max): 300V

Push-on Connector



Part Number	Tab Size mm	Pack Qty
QBPOA63	6.3mm	100

Cable size range: 1.5-2.5mm sq.
Current rating (max): 15A Voltage (max): 300V

Pin



Part Number	Dia x Length mm	Pack Qty
QBP12	1.9mm X 12mm	100

Cable size range: 1.5-2.5mm sq.
Current rating (max): 27A Voltage (max): 600V

Heat Shrink Butt



Part Number	Pack Qty
QHSEB2	100

Cable size range: 1.5mm-2.5mm sq.
Current rating (max): 27A Voltage (max): 600V

Male Bullet



Part Number	Bullet Dia mm	Pack Qty
QBAB4M	4mm	100
QBAB5M	5mm	100

Cable size range: 1.5-2.5mm sq.
Current rating (max): 15A Voltage (max): 300V

Female Bullet



Part Number	Bullet Dia mm	Pack Qty
QBAB4F	4mm	100
QBAB5F	5mm	100

Cable size range: 1.5-2.5mm sq.
Current rating (max): 15A Voltage (max): 300V

Ring



Part Number	Stud Size	Pack Qty
QYR4	4mm	100
QYR5	5mm	100
QYR6	6mm	100
QYR8	8mm	100
QYR10	10mm	100
QYR12	12mm	100

Cable size range: 4-6mm sq. Current rating (max): 48A Voltage (max): 600V

Male Push-on



Part Number	Tab Size mm	Pack Qty
QYPO63M	6.3mm X 0.8mm	100

Cable size range: 4-6mm sq. Current rating (max): 24A Voltage (max): 300V

Female Push-on



Part Number	Tab Size mm	Pack Qty
QYPO63F	6.3mm X 0.8mm	100
QYPO95F	9.5mm X 1.1mm	100

Cable size range: 4-6mm sq. Current rating (max): 24A Voltage (max): 300V

Spade



Part Number	Stud Size	Pack Qty
QYF3N	3.5mm	100
QYF4N	4mm	100
QYF5	5mm	100
QYF6	6mm	100

Cable size range: 4-6mm sq. Current rating (max): 48A Voltage (max): 600V

Female Push-on Fully Insulated



Part Number	Tab Size mm	Pack Qty
QYFPO63F	63mm	100
QYFPO95F	95mm	100

Cable size range: 4-6mm sq. Current rating (max): 24A Voltage (max): 300V

Blade



Part Number	Dia x Length mm	Pack Qty
QYBL10	2.8mm X 10mm	100
QYBL18	2.8mm X 18mm	100

Cable size range: 4-6mm sq. Current rating (max): 48A Voltage (max): 600V

Butt



Part Number	Pack Qty
QYB	100

Cable size range: 4-6mm sq. Current rating (max): 24A Voltage (max): 300V

Push-on Connector



Part Number	Tab Size mm	Pack Qty
QYPOA63	6.3mm	100

Cable size range: 4-6mm sq. Current rating (max): 24A Voltage (max): 300V

Pin



Part Number	Dia x Length mm	Pack Qty
QYP14	2.9mm X 14mm	100

Cable size range: 4-6mm sq. Current rating (max): 48A Voltage (max): 600V

Heat Shrink Butt



Part Number	Pack Qty
QHSB5	100

Cable size range: 4-6mm sq. Current rating (max): 48A Voltage (max): 600V

Male Bullet



Part Number	Bullet Dia mm	Pack Qty
QYAB5M	5mm	100

Cable size range: 4-6mm sq. Current rating (max): 24A Voltage (max): 300V

Female Bullet



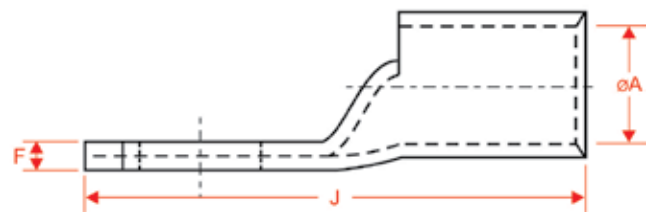
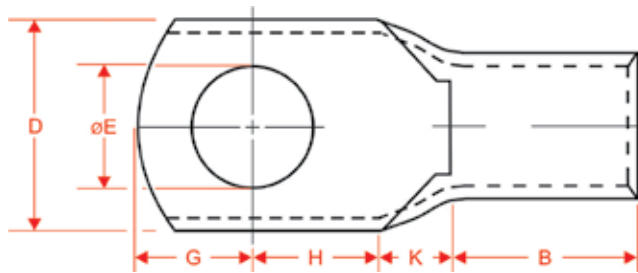
Part Number	Bullet Dia mm	Pack Qty
QYAB5F	5mm	100

Cable size range: 4-6mm sq. Current rating (max): 24A Voltage (max): 300V

Copper Tube Terminals

Specification Requirements

- a. Finish: Electro tinned
- b. Copper conductivity to 97% IACS
- c. Copper tube double annealed
- d. All terminals up to 240mm² will have bell mouth cable entrance
- e. Working temperature up to 180°C (Standard)
- f. Working temperature with nickel plating up to 350°C (Special)



Part Number	Cable Size sq mm	Stud Size mm dia	ØA	B	D	ØE	F	G	H	J	K	Pack Qty
QCT10-5	10mm	5mm HOLE	4.5mm	12mm	8.7mm	5.2mm	1.42mm	4mm	5mm	24mm	3mm	100
QCT10-6	10mm	6mm HOLE	4.5mm	12mm	12mm	6.2mm	1.3mm	5mm	6mm	26mm	3mm	100
QCT10-8	10mm	8mm HOLE	4.5mm	12mm	12mm	8.4mm	1.03mm	6mm	9mm	30mm	3mm	100
QCT10-10	10mm	10mm HOLE	4.5mm	12mm	19mm	10.5mm	1.8mm	10mm	10mm	35mm	3mm	100
QCT10-12	10mm	12mm HOLE	4.5mm	12mm	19mm	13mm	1.8mm	12mm	12mm	39mm	3mm	100
QCT16-6	16mm	6mm HOLE	5.5mm	15mm	11mm	6.5mm	1.4mm	5mm	9mm	33mm	4mm	100
QCT16-8	16mm	8mm HOLE	5.5mm	15mm	11mm	8.4mm	1.31mm	6mm	9mm	34mm	4mm	100
QCT16-10	16mm	10mm HOLE	5.5mm	15mm	19mm	10.3mm	1.8mm	10mm	10mm	39mm	4mm	100
QCT16-12	16mm	12mm HOLE	5.5mm	15mm	19mm	13mm	1.8mm	12mm	12mm	43mm	4mm	100
QCT25-5	25mm	5mm HOLE	7mm	15mm	12.6mm	5.2mm	2mm	5mm	6mm	30mm	4mm	50
QCT25-6	25mm	6mm HOLE	7mm	15mm	12.6mm	6.5mm	2mm	5mm	6mm	30mm	4mm	50
QCT25-8	25mm	8mm HOLE	7mm	15mm	16mm	8.4mm	1.6mm	6mm	9mm	34mm	4mm	50
QCT25-10	25mm	10mm HOLE	7mm	15mm	17.5mm	10.5mm	1.5mm	10mm	10mm	39mm	4mm	50
QCT25-12	25mm	12mm HOLE	7mm	15mm	17.5mm	13mm	1.5mm	12mm	12mm	43mm	4mm	50
QCT35-6	35mm	6mm HOLE	8.6mm	18mm	15.7mm	6.4mm	2.2mm	8mm	8mm	39mm	5mm	50
QCT35-8	35mm	8mm HOLE	8.6mm	18mm	15.7mm	8.4mm	2.2mm	8mm	8mm	39mm	5mm	50
QCT35-10	35mm	10mm HOLE	8.6mm	18mm	16.2mm	10.5mm	2mm	9mm	11mm	43mm	5mm	50
QCT35-12	35mm	12mm HOLE	8.6mm	18mm	18mm	13mm	1.8mm	9.2mm	10.8mm	43mm	5mm	50
QCT50-6	50mm	6mm HOLE	9.6mm	23mm	17.4mm	6.4mm	2.4mm	8.5mm	8.5mm	46mm	6mm	50
QCT50-8	50mm	8mm HOLE	9.6mm	23mm	17.4mm	8.4mm	2.4mm	8.5mm	8.5mm	46mm	6mm	50
QCT50-10	50mm	10mm HOLE	9.6mm	23mm	17.4mm	10.5mm	2.4mm	10mm	10mm	49mm	6mm	50
QCT50-12	50mm	12mm HOLE	9.6mm	23mm	17.2mm	13mm	2.4mm	12mm	13mm	54mm	6mm	50
QCT70-10	70mm	10mm HOLE	11.2mm	23mm	21.5mm	10.5mm	3mm	11mm	11mm	52mm	7mm	25
QCT70-12	70mm	12mm HOLE	11.2mm	23mm	21.5mm	13mm	3mm	11mm	11mm	52mm	7mm	25
QCT70-14	70mm	14mm HOLE	11.2mm	23mm	25mm	15mm	3mm	12.5mm	12.5mm	55mm	7mm	25

Copper Tube Terminals



Part Number	Cable Size sq mm	Stud Size mm dia	ØA	B	D	ØE	F	G	H	J	K	Pack Qty
QCT95-8	95mm	8mm HOLE	13.5mm	30mm	21.5mm	8.4mm	3.9mm	12mm	12mm	63mm	9mm	25
QCT95-10	95mm	10mm HOLE	13.5mm	30mm	25mm	10.5mm	3.9mm	12mm	12mm	63mm	9mm	25
QCT95-12	95mm	12mm HOLE	13.5mm	30mm	25mm	13mm	3.9mm	12mm	12mm	63mm	9mm	25
QCT95-14	95mm	14mm HOLE	13.5mm	30mm	28mm	4.7mm	3.9mm	14mm	14mm	67mm	9mm	25
QCT95-16	95mm	16mm HOLE	13.5mm	30mm	28mm	17mm	3.9mm	16mm	16mm	71M	9mm	25
QCT120-8	120mm	8mm HOLE	15mm	25mm	27.5mm	8.4mm	3.9mm	12mm	12mm	59mm	10mm	25
QCT120-10	120mm	10mm HOLE	15mm	25mm	27.5mm	10.5mm	3.9mm	12mm	12mm	59mm	10mm	25
QCT120-12	120mm	12mm HOLE	15mm	25mm	27.5mm	13mm	3.9mm	12mm	12mm	59mm	10mm	25
QCT120-14	120mm	14mm HOLE	15mm	25mm	27.5mm	15mm	3.9mm	15mm	15mm	65mm	10mm	25
QCT120-16	120mm	16mm HOLE	15mm	25mm	27.5mm	17mm	3.9mm	15mm	15mm	65mm	10mm	25
QCT150-8	150mm	8mm HOLE	16.5mm	26mm	30.2mm	8.4mm	4.38mm	14mm	14mm	65mm	11mm	20
QCT150-10	150mm	10mm HOLE	16.5mm	26mm	30.2mm	10.5mm	4.38mm	14mm	14mm	65mm	11mm	20
QCT150-12	150mm	12mm HOLE	16.5mm	26mm	30.2mm	13mm	4.38mm	14mm	14mm	65mm	11mm	20
QCT150-16	150mm	16mm HOLE	16.5mm	26mm	30.2mm	17mm	4.38mm	16mm	16mm	73mm	11mm	20
QCT150-20	150mm	20mm HOLE	16.5mm	26mm	30.2mm	21mm	4.38mm	20mm	20mm	77mm	11mm	20
QCT185-10	185mm	10mm HOLE	19mm	28mm	34mm	10.5mm	4mm	14mm	14mm	68mm	12mm	20
QCT185-12	185mm	12mm HOLE	19mm	28mm	34mm	13mm	4mm	14mm	14mm	68mm	12mm	20
QCT185-16	185mm	16mm HOLE	19mm	28mm	34mm	17mm	4mm	16mm	16mm	72mm	12mm	20
QCT185-20	185mm	20mm HOLE	19mm	28mm	34mm	21mm	4mm	18mm	18mm	76mm	12mm	20
QCT240-10	240mm	10mm HOLE	21mm	33mm	37.6mm	10.5mm	5mm	15mm	15mm	77mm	14mm	20
QCT240-12	240mm	12mm HOLE	21mm	33mm	37.6mm	13mm	5mm	15mm	15mm	77mm	14mm	20
QCT240-14	240mm	14mm HOLE	21mm	33mm	37.6mm	15mm	5mm	15mm	15mm	77mm	14mm	20
QCT240-16	240mm	16mm HOLE	21mm	33mm	37.6mm	17mm	5mm	19mm	19mm	85mm	14mm	20

Copper Tube Butt Splices



Part Number	Description	Length	Width	Max. Dia.	Pack Qty
QB1-5	1.5 mm Copper Butt Splice	12mm	1.8mm	3.7mm	25
QB2-5	2.5 mm Copper Butt Splice	15mm	2.3mm	4mm	25
QB4-6	4-6 mm Copper Butt Splice	15mm	3.8mm	5.5mm	25
QB10	10 mm Copper Butt Splice	20mm	4.5mm	6mm	25
QB16	16 mm Copper Butt Splice	20mm	5.5mm	6.8mm	25
QB25	25 mm Copper Butt Splice	32mm	6.8mm	8.8mm	25
QB35	35 mm Copper Butt Splice	36mm	8.6mm	10.8mm	25
QB50	50 mm Copper Butt Splice	40mm	9.6mm	12mm	25
QB70	70 mm Copper Butt Splice	40mm	11.2mm	14.7mm	25
QB95	95 mm Copper Butt Splice	45mm	13.5mm	17.5mm	25
QB120	120 mm Copper Butt Splice	45mm	15mm	19mm	25
QB150	150 mm Copper Butt Splice	55mm	16.5mm	21mm	20
QB185	185 mm Copper Butt Splice	65mm	19mm	23.5mm	20
QB240	240 mm Copper Butt Splice	80mm	21mm	26mm	10

Note 1

Blank terminal palms are available from 10mm² to 240mm².

Note 2

When using flexible fine strand or welding cable it may be necessary to select the next larger terminal size, i.e. 70mm² fine strand, select 95mm² terminal.

Cable Ties



Unicrimp Cable Ties are produced on multi-impression tools which mould complete one piece ties with no metal parts.

They are manufactured from tough durable Nylon 6/6 which has been tested to underwriters laboratory UL94V2. The material is zero halogenated and also has a low smoke and fume capability when compared with materials such as PVC, PP, PE, ABS, POM, ect. The classified oxygen index at max 28% dry is considered excellent in halogen free and L.S.F. situations.

These specifications include for the performance testing requirements with regard to flammability, tensile strength, vibration, corrosion, etc., and in most cases exceed the

recommendations. The ties can be tensioned by hand or by the use of applied tensioning tools.

The colour shade of the standard ties is natural nylon or black, but other colours are available to special order. Black cable ties are recommended for general outdoor use and have a highly durable resistance to Ultra Violet Light.

Due to the variation in requirement for this type of application the cable ties can be manufactured from higher performance Nylon 6/6 with intensive weather resistance qualities. All general specification details are incorporated as indicated in Table 'A' and for any additional information please contact our offices.

Table A		Test Method
Material	Nylon 6/6	
Working Temperature Range	-40°C to 85°	
UL Flammability Rating	UL94	V2
Oxygen Index	25% - 28%	
Smoke Density	Flaming 35 Non Flaming 13	
Water Absorption (24 hours)	1.3%	

Loop Tensile Strength (kgs)	
Miniature	8.1kgs
Intermediate	18.2kgs
Standard	22.2kgs
Light Heavy	54.5kgs
Heavy	79.4kgs
Extra Heavy	113.5kgs



Miniature Range

Part Number	Colour	Length	Width	Max. Dia.	Min. Strength	Pack Qty
QT80M	Natural	80mm	2.5mm	14mm	8.1kg	100
QTB80M	Black	80mm	2.5mm	14mm	8.1kg	100
QT100M	Natural	100mm	2.5mm	20mm	8.1kg	100
QTB100M	Black	100mm	2.5mm	20mm	8.1kg	100
QTR100M	Red	100mm	2.5mm	20mm	8.1kg	100
QTBL100M	Blue	100mm	2.5mm	20mm	8.1kg	100
QTY100M	Yellow	100mm	2.5mm	20mm	8.1kg	100
QTG100M	Green	100mm	2.5mm	20mm	8.1kg	100
QT120M	Natural	120mm	2.5mm	24mm	8.1kg	100
QTB120M	Black	120mm	2.5mm	24mm	8.1kg	100
QT140MP	Natural	140mm	2.3mm	30mm	8kg	100
QT165M	Natural	165mm	2.5mm	36mm	8.1kg	100
QTB165M	Black	165mm	2.5mm	36mm	8.1kg	100
QT200M	Natural	200mm	2.5mm	50mm	8.1kg	100
QTB200M	Black	200mm	2.5mm	50mm	8.1kg	100

Intermediate Range

3.2mm
^
3.6mm



Part Number	Colour	Length	Width	Max. Dia.	Min. Strength	Pack Qty
QTB140MP	Black	140mm	3.2mm	30mm	8kg	100
QT150I	Natural	150mm	3.6mm	30mm	18.2kg	100
QTB150I	Black	150mm	3.6mm	30mm	18.2kg	100
QTR150I	Red	150mm	3.6mm	30mm	18.2kg	100
QTB150I	Blue	150mm	3.6mm	30mm	18.2kg	100
QTY150I	Yellow	150mm	3.6mm	30mm	18.2kg	100
QTG150I	Green	150mm	3.6mm	30mm	18.2kg	100
QT180IP	Natural	180mm	3.2mm	40mm	18kg	100
QTB180IP	Black	180mm	3.2mm	40mm	18kg	100
QT200I	Natural	200mm	3.6mm	50mm	18.2kg	100
QTB200I	Black	200mm	3.6mm	50mm	18.2kg	100
QT290I	Natural	290mm	3.6mm	75mm	18.2kg	100
QTB290I	Black	290mm	3.6mm	75mm	18.2kg	100
QT370I	Natural	370mm	3.6mm	100mm	18.2kg	100
QTB370I	Black	370mm	3.6mm	100mm	18.2kg	100

Standard Range

4.5mm
^
4.8mm



Part Number	Colour	Length	Width	Max. Dia.	Min. Strength	Pack Qty
QT120S	Natural	120mm	4.8mm	24mm	22.2kg	100
QTB120S	Black	120mm	4.8mm	24mm	22.2kg	100
QT160S	Natural	160mm	4.8mm	36mm	22.2kg	100
QTB160S	Black	160mm	4.8mm	36mm	22.2kg	100
QT190S	Natural	190mm	4.8mm	45mm	22.2kg	100
QTB190S	Black	190mm	4.8mm	45mm	22.2kg	100
QT200S	Natural	200mm	4.8mm	50mm	22.2kg	100
QTR200S	Red	200mm	4.8mm	50mm	22.2kg	100
QTB200S	Blue	200mm	4.8mm	50mm	22.2kg	100
QTY200S	Yellow	200mm	4.8mm	50mm	22.2kg	100
QTG200S	Green	200mm	4.8mm	50mm	22.2kg	100
QTB200S	Black	200mm	4.8mm	50mm	22.2kg	100
QT250S	Natural	250mm	4.8mm	70mm	22.2kg	100
QTB250S	Black	250mm	4.8mm	70mm	22.2kg	100
QT300SP	Natural	300mm	4.5mm	75mm	22kg	100
QTB300SP	Black	300mm	4.5mm	75mm	22kg	100
QT300S	Natural	300mm	4.8mm	75mm	22.2kg	100
QTB300S	Black	300mm	4.8mm	75mm	22.2kg	100
QTR300S	Red	300mm	4.8mm	75mm	22.2kg	100
QTB300S	Blue	300mm	4.8mm	75mm	22.2kg	100
QTY300S	Yellow	300mm	4.8mm	75mm	22.2kg	100
QTG300S	Green	300mm	4.8mm	75mm	22.2kg	100
QTS300S	Silver	300mm	4.8mm	75mm	22.2kg	100
QT370SP	Natural	368mm	4.5mm	95mm	22kg	100
QTB370SP	Black	368mm	4.5mm	95mm	22kg	100
QT370S	Natural	370mm	4.8mm	100mm	22.2kg	100
QTB370S	Black	370mm	4.8mm	100mm	22.2kg	100
QTR370S	Red	370mm	4.8mm	100mm	22.2kg	100
QTB370S	Blue	370mm	4.8mm	100mm	22.2kg	100
QTY370S	Yellow	370mm	4.8mm	100mm	22.2kg	100
QTG370S	Green	370mm	4.8mm	100mm	22.2kg	100
QTS370S	Silver	370mm	4.8mm	100mm	22.2kg	100
QT430S	Natural	430mm	4.8mm	115mm	22.2kg	100
QTB430S	Black	430mm	4.8mm	115mm	22.2kg	100

Extra Wide Ties



The Unicrimp range of heavy duty cable ties are designed for applications that require combined high strength fixing and a positive locking capability. They are particularly suitable in difficult situations frequently found in Petro Chemical or Marine Industries.

They are available in two colours natural or black. See Table A (page 11) for full specification of nylon material.



Light Heavy Range

Part Number	Colour	Length	Width	Max. Dia.	Min. Strength	Pack Qty
QT150LH	Natural	150mm	7.6mm	36mm	54.5kg	100
QTB150LH	Black	150mm	7.6mm	36mm	54.5kg	100
QT200LH	Natural	200mm	7.6mm	50mm	54.5kg	100
QTB200LH	Black	200mm	7.6mm	50mm	54.5kg	100
QT300LH	Natural	300mm	7.6mm	80mm	54.5kg	100
QTB300LH	Black	300mm	7.6mm	80mm	54.5kg	100
QT370LHP	Natural	368mm	7.2mm	95mm	53kg	100
QTB370LHP	Black	368mm	7.2mm	95mm	53kg	100
QT370LH	Natural	370mm	7.6mm	105mm	54.5kg	100
QTB370LH	Black	370mm	7.6mm	105mm	54.5kg	100



Heavy Range

Part Number	Colour	Length	Width	Max. Dia.	Min. Strength	Pack Qty
QT450H	Natural	450mm	8mm	115mm	62kg	100
QTB450H	Black	450mm	8mm	115mm	62kg	100
QT550H	Natural	550mm	8mm	140mm	62kg	100
QTB550H	Black	550mm	8mm	140mm	62kg	100
QT760H	Natural	760mm	9mm	190mm	79.4kg	100
QTB760H	Black	760mm	9mm	190mm	79.4kg	100
QT810H	Natural	810mm	9mm	230mm	79.4kg	100
QTB810H	Black	810mm	9mm	230mm	79.4kg	100



Extra Heavy Range

Part Number	Colour	Length	Width	Max. Dia.	Min. Strength	Pack Qty
QT230XH	Natural	230mm	12.7mm	50mm	113.5kg	100
QTB230XH	Black	230mm	12.7mm	50mm	113.5kg	100
QT280XH	Natural	280mm	12.7mm	70mm	113.5kg	100
QTB280XH	Black	280mm	12.7mm	70mm	113.5kg	100
QT380XH	Natural	380mm	12.7mm	100mm	113.5kg	100
QTB380XH	Black	380mm	12.7mm	100mm	113.5kg	100
QT480XH	Natural	480mm	12.7mm	130mm	113.5kg	100
QTB480XH	Black	480mm	12.7mm	130mm	113.5kg	100
QT550XH	Natural	550mm	12.7mm	150mm	113.5kg	100
QTB550XH	Black	550mm	12.7mm	150mm	113.5kg	100
QT730XH	Natural	730mm	12.7mm	185mm	113.5kg	100
QTB730XH	Black	730mm	12.7mm	185mm	113.5kg	100
QT880XH	Natural	880mm	12.7mm	250mm	113.5kg	100
QTB880XH	Black	880mm	12.7mm	250mm	113.5kg	100
QT1030XH	Natural	1030mm	12.7mm	310mm	113.5kg	100
QTB1030XH	Black	1030mm	12.7mm	310mm	113.5kg	100

Releasable Ties



Releasable cable ties, designed to facilitate routine changes and repairs. Press tab for easy removal. Mountable head cable ties used to secure bundled harnesses to panels. They may also be pre mounted to existing installation before final assembly.

See 'Table A' on page 11 for full specification of nylon material.

4.8mm



Part Number	Colour	Length	Width	Max. Dia.	Min. Strength	Pack Qty
QT200RE	Natural	200mm	4.8mm	50mm	22.2kg	100
QTB200RE	Black	200mm	4.8mm	50mm	22.2kg	100
QT300RE	Natural	300mm	4.8mm	75mm	22.2kg	100
QTB300RE	Black	300mm	4.8mm	75mm	22.2kg	100
QT370RE	Natural	370mm	4.8mm	100mm	22.2kg	100
QTB370RE	Black	370mm	4.8mm	100mm	22.2kg	100

Stainless Steel Roller Ball Cable Ties

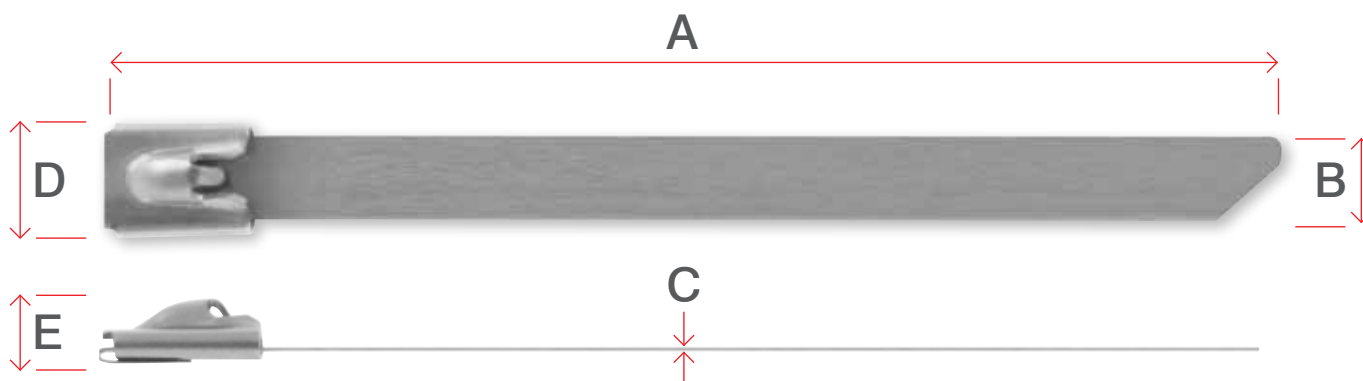


Minimum loop tensile strength 4.8mm wide = 44kg

Minimum loop tensile strength 7.9mm wide = 110kg

Dimension A Nominal
Dimension B + -0.4mm
Dimension C + -0.04mm

Dimension D Nominal
Dimension E Nominal

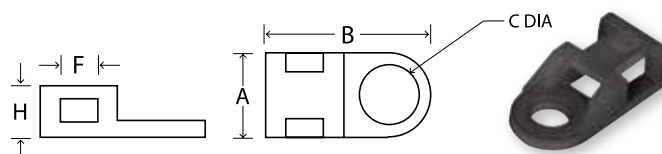


Part Number	A	B	C	D	E	Max. Dia.	Pack Qty
QSST150S	150mm	4.6mm	0.25mm	6.4mm	4mm	35mm	100
QSST200S	200mm	4.6mm	0.25mm	6.4mm	4mm	50mm	100
QSST300S	300mm	4.6mm	0.25mm	6.4mm	4mm	83mm	100
QSST360S	370mm	4.6mm	0.25mm	6.4mm	4mm	100mm	100
QSST520S	520mm	4.6mm	0.25mm	6.4mm	4mm	150mm	100
QSST300LH	300mm	7.9mm	0.25mm	10.6mm	5.4mm	83mm	100
QSST360LH	360mm	7.9mm	0.25mm	10.6mm	5.4mm	100mm	100
QSST520LH	520mm	7.9mm	0.25mm	10.6mm	5.4mm	150mm	100
QSST840LH	840mm	7.9mm	0.25mm	10.6mm	5.4mm	250mm	100

Accessories

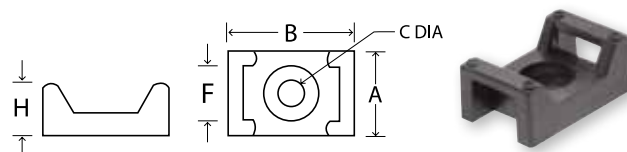
Unicrimp accessories are designed to incorporate the majority of features applicable to the positioning of cable ties. Self adhesive bases, cradles, eyelets and clamps are supplied and manufactured from A.B.S. or Nylon 6/6 material. In case of self adhesive components the adhesive pads themselves have a base synthetic rubber foundation which when applied gives a high permanent bond to most surfaces. On all applications a dual option of bolt fixings is designed into the base as a preference if required.

Eyelets



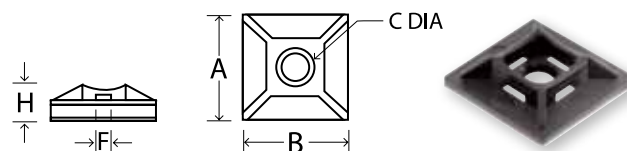
Part Number	Colour	A	B	C	F	H	Max. Dia.	Pack Qty
QTE	Natural	9.5mm	19mm	4.3mm	5mm	5mm	5mm	100
QTBE	Black	9.5mm	19mm	4.3mm	5mm	5mm	5mm	100

Cradles



Part Number	Colour	A	B	C	F	H	Max. Dia.	Pack Qty
QTC	Natural	16mm	23mm	5mm	9mm	9.8mm	9mm	100
QTBC	Black	16mm	23mm	5mm	9mm	9.8mm	9mm	100

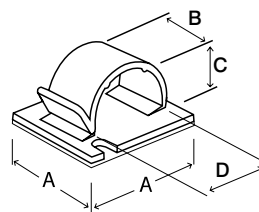
2-Way Cable Tie Base



Part Number	Colour	A	B	C	F	H	Max. Dia.	Pack Qty
QTB12	Natural	18.9mm	18.9mm	4.8mm	4.2mm	4.6mm	3.6mm	100
QTB12	Black	18.9mm	18.9mm	4.8mm	4.2mm	4.6mm	3.6mm	100
QTB22	Natural	26.3mm	26.3mm	5mm	5.6mm	6mm	5.6mm	100
QTB22	Black	26.3mm	26.3mm	5mm	5.6mm	6mm	5.6mm	100

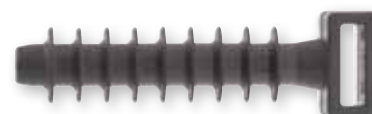
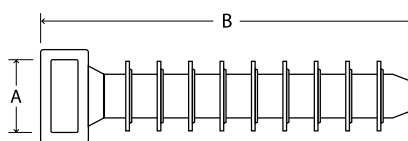
Mounts

- Designed for heavy duty harnessing applications
- Self adhesive
- Provides fast, strong mounting system for securing cables



Part Number	Colour	A	B	C	D	Pack Qty
QTM5	Natural	19mm	10mm	4.9mm	4.9mm	100
QTM5B	Black	19mm	10mm	4.9mm	4.9mm	100
QTM11	Natural	26.8mm	12.3mm	8.3mm	11mm	100
QTM5B11	Black	26.8mm	12.3mm	8.3mm	11mm	100
QTM17	Natural	25.5mm	15.8mm	13.3mm	17mm	100
QTM5B17	Black	25.5mm	15.8mm	13.3mm	17mm	100

Wall Plug Mount



Part Number	Description	A	B	Pack Qty
QMM9	Masonry Fixing For Cable Ties	9.5mm	42.6mm	100

Earth Sleeving



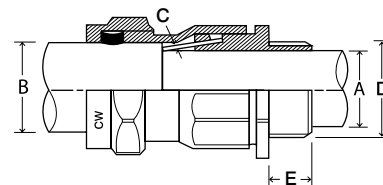
Part Number	Description	Colour	Pack Qty
QES2	100M X 2mm Earth Sleeving	Green/Yellow	1
QES3	100M X 3mm Earth Sleeving	Green/Yellow	1
QES4	100M X 4mm Earth Sleeving	Green/Yellow	1

Cable Gland Selection Chart

The gland sizes recommended in this chart are for guidance only and are based on cables manufactured to BS 5467. Actual cable dimensions must be used for gland selection.

Cable Size	Single Core	2 Core	3 Core	4 Core	Number Of Cores							
					5	7	10	12	19	27	37	48
1.5	-	16	16	20S	20S	20	20	25	25	32	32	32
2.5	-	20S	20S	20S	20	20	25	25	25	32	40	40
4.0	-	20S	20S	20	20	20	25	25	32	40	40	50
6.0	-	20	20	20	20							
10.0	-	20	20	25	25							
16.0	-	25	25	25	25							
25.0	-	25	32	32	32							
35.0	-	32	32	32	40							
50.0	20	25	32	32	50							
70.0	20	32	32	40	50							
95.0	25	32	40	50S								
120	25	40	50S	50								
150	32	40	50S	50								
185	32	50S	50	63S								
240	32	50	63S	63								
300	40	63S	63	75S								
400	40	63S	75S	75								

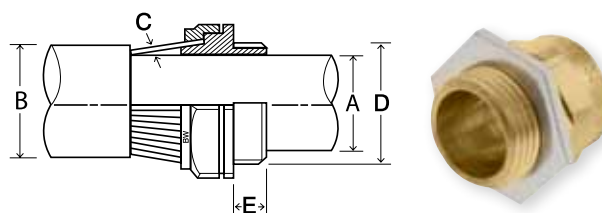
AE1W Industrial Brass Glands



Part Number	Description	Gland Size D	Std. Entry Thread (E)	Min Thread Length	Cable Dia. Max (A)	Cable Dia. Max (B)	Armour Wire Dia. (C)	Pack Qty
QAE1W20	AE1W Brass Gland 20mm	20	20mm	10mm	13.9mm	15/20.9mm	0.9/1.25mm	2
QAE1W20S	AE1W Brass Gland 20mm	20s	20mm	10mm	11.6mm	11.4/15.9mm	0.9/1.25mm	2
QAE1W25	AE1W Brass Gland 25mm	25	25mm	10mm	19.9mm	20.3/27.4mm	1.25/1.6mm	2
QAE1W32	AE1W Brass Gland 32mm	32	32mm	10mm	26.2mm	26/33.9mm	1.6/2mm	2

BW Industrial Brass Glands

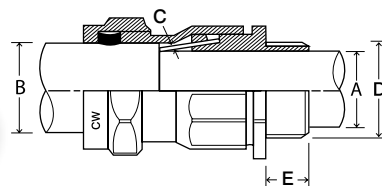
- Tested and approved to BS6121 pt1
- Manufactured in cast brass to BS2874 and defect free
- Supplied in kit form with Shrouds, Earth Tags & Steel Locknuts
- Standard 1.5mm Thread Pitch



Part Number	Description	Gland Size D	Std. Entry Thread (E)	Min Thread Length	Cable Dia. Max (A)	Cable Dia. Max (B)	Armour Wire Dia. (C)	Pack Qty
QBW20	BW Brass Gland 20mm	20	20mm	10mm	13.9mm	21.1mm	0.9/1.25mm	2
QBW20-LSF	BW LSF Brass Gland 20mm	20	20mm	10mm	13.9mm	21.1mm	0.9/1.25mm	2
QBW20S	BW Brass Gland 20mm	20s	20mm	10mm	11.6mm	16.1mm	0.9/1.25mm	2
QBW20S-LSF	BW LSF Brass Gland 20mm	20s	20mm	10mm	11.6mm	16.1mm	0.9/1.25mm	2
QBW25	BW Brass Gland 25mm	25	25mm	10mm	19.9mm	27.4mm	1.25/1.6mm	2
QBW25-LSF	BW LSF Brass Gland 25mm	25	25mm	10mm	19.9mm	27.4mm	1.25/1.6mm	2
QBW32	BW Brass Gland 32mm	32	32mm	10mm	26.2mm	34.4mm	1.6/2.0mm	2
QBW32-LSF	BW LSF Brass Gland 32mm	32	32mm	10mm	26.2mm	34.4mm	1.6/2.0mm	2
QBW40	BW Brass Gland 40mm	40	40mm	15mm	32.1mm	42.4mm	1.6/2.0mm	1
QBW50	BW Brass Gland 50mm	50	50mm	15mm	44mm	55.7mm	2.0/2.5mm	1
QBW50S	BW Brass Gland 50S mm	50s	50mm	15mm	38.1mm	50.1mm	2.0/2.5mm	1
QBW63	BW Brass Gland 63mm	63	63mm	15mm	55.9mm	68.2mm	2.5mm	1
QBW63S	BW Brass Gland 63 Smm	63s	63mm	15mm	50mm	62.4mm	2.5mm	1

CW Industrial Brass Glands

- Tested and approved to BS6121 pt1
- Manufactured in cast brass to BS2874 and defect free
- Supplied in kit form with Shrouds, Earth Tags & Steel Locknuts
- Standard 1.5mm Thread Pitch



Part Number	Description	Gland Size D	Std. Entry Thread (E)	Min Thread Length	Cable Dia. Max (A)	Cable Dia. Max (B)	Armour Wire Dia. (C)	Pack Qty
QCW20	CW Brass Gland 20mm	20	20mm	10mm	13.9mm	15/20.9mm	0.9/1.25mm	2
QCW20-LSF	CW LSF Brass Gland 20mm	20	20mm	10mm	13.9mm	15/20.9mm	0.9/1.25mm	2
QCW20S	CW Brass Gland 20mm	20s	20mm	10mm	11.6mm	11.4/15.9mm	0.9/1.25mm	2
QCW20S-LSF	CW LSF Brass Gland 20mm	20s	20mm	10mm	11.6mm	11.4/15.9mm	0.9/1.25mm	2
QCW25	CW Brass Gland 25mm	25	25mm	10mm	19.9mm	20.3/27.4mm	1.25/1.6mm	2
QCW25-LSF	CW LSF Brass Gland 25mm	25	25mm	10mm	19.9mm	20.3/27.4mm	1.25/1.6mm	2
QCW32	CW Brass Gland 32mm	32	32mm	10mm	26.2mm	26/33.9mm	1.6/2mm	2
QCW32-LSF	CW LSF Brass Gland 32mm	32	32mm	10mm	26.2mm	26/33.9mm	1.6/2mm	2
QCW40	CW Brass Gland 40mm	40	40mm	15mm	32.1mm	31/40.4mm	1.6/2mm	1
QCW50	CW Brass Gland 50mm	50	50mm	15mm	44mm	43/53.1mm	2/2.5mm	1
QCW50S	CW Brass Gland 50mm	50s	50mm	15mm	38.1mm	36.5/46.7mm	2/2.5mm	1
QCW63	CW Brass Gland 63mm	63	63mm	15mm	55.9mm	58/65.9mm	2.5mm	1
QCW63S	CW Brass Gland 63mm	63s	63mm	15mm	50mm	48.9/59.4mm	2.5mm	1
QCW75	CW Brass Gland 75mm	75	75mm	15mm	67.9mm	64.9/78.5mm	2.5/3mm	1
QCW75S	CW Brass Gland 75mm	75s	75mm	15mm	61.9mm	60.6/72.1mm	2.5mm	1

Nylon Glands

- Made from Polyamide 6
- VDE Approved
- IP68 ingress protection
- Includes Locknut



Part Number	Description	Width	Length	Cable Diameter	Pack Qty
QCGM12BLK	12mm Gland Nylon Black	12mm	15mm	3-6.5mm	10
QCGM16BLK	16mm Gland Nylon Black	16mm	22mm	5-10mm	10
QCGM20BLK	20mm Gland Nylon Black	20mm	24mm	6-12mm	10
QCGM20LBLK	20mm Gland Nylon Black	20mm	27mm	10-14mm	10
QCGM25BLK	25mm Gland Nylon Black	25mm	33mm	13-18mm	10
QCGM32BLK	32mm Gland Nylon Black	32mm	42mm	18-25mm	10
QCGM40BLK	40mm Gland Nylon Black	40mm	53mm	22-32mm	5
QCGM50BLK	50mm Gland Nylon Black	50mm	60mm	30-38mm	5
QCGM63BLK	63mm Gland Nylon Black	63mm	65mm	34-44mm	5
QCGM12GRY	12mm Gland Nylon Grey	12mm	15mm	3-6.5mm	10
QCGM16GRY	16mm Gland Nylon Grey	16mm	22mm	5-10mm	10
QCGM20GRY	20mm Gland Nylon Grey	20mm	24mm	6-12mm	10
QCGM20LGRY	20mm Gland Nylon Grey	20mm	27mm	10-14mm	10
QCGM25GRY	25mm Gland Nylon Grey	25mm	33mm	13-18mm	10
QCGM32GRY	32mm Gland Nylon Grey	32mm	42mm	18-25mm	10
QCGM40GRY	40mm Gland Nylon Grey	40mm	53mm	22-32mm	5
QCGM50GRY	50mm Gland Nylon Grey	50mm	60mm	30-38mm	5
QCGM63GRY	63mm Gland Nylon Grey	63mm	65mm	34-44mm	5
QCGM12RED	12mm Gland Nylon Red	12mm	15mm	3-6.5mm	10
QCGM16RED	16mm Gland Nylon Red	16mm	22mm	5-10mm	10
QCGM20RED	20mm Gland Nylon Red	20mm	24mm	6-12mm	10
QCGM20LRED	20mm Gland Nylon Red	20mm	27mm	10-14mm	10
QCGM25RED	25mm Gland Nylon Red	25mm	33mm	13-18mm	10
QCGM32RED	32mm Gland Nylon Red	32mm	42mm	18-25mm	10
QCGM16WHT	16mm Gland Nylon White	16mm	22mm	5-10mm	10
QCGM20WHT	20mm Gland Nylon White	20mm	24mm	6-12mm	10
QCGM20LWHT	20mm Gland Nylon White	20mm	27mm	10-14mm	10
QCGM25WHT	25mm Gland Nylon White	25mm	33mm	13-18mm	10
QCGM32WHT	32mm Gland Nylon White	32mm	42mm	18-25mm	10
QCGM40WHT	40mm Gland Nylon White	40mm	53mm	22-32mm	5
QCGM50WHT	50mm Gland Nylon White	50mm	60mm	30-38mm	5
QCGM63WHT	63mm Gland Nylon White	63mm	65mm	34-44mm	5

Grommets - Quick Fit Type



Part Number	Description	Width	Pack Qty
QGROMQ20OPEN	Cable Grommets Quick Fit Open 20mm	20mm	100
QGROMQ25OPEN	Cable Grommets Quick Fit Open 25mm	25mm	100
QGROMQ20CLOSED	Cable Grommets Quick Fit Closed 20mm	20mm	100
QGROMQ25CLOSED	Cable Grommets Quick Fit Closed 25mm	25mm	100

Grommets - Standard Type



Part Number	Description	Width	Pack Qty
QGROM20OPEN	20mm Open Grommet	20mm	100
QGROM20CLOSED	20mm Closed Grommet	20mm	100
QGROM25OPEN	25mm Open Grommet	25mm	50
QGROM25CLOSED	25mm Closed Grommet	25mm	50

Earth Clamps

- Tested and approved to BS951



Part Number	Description	Pack Qty
QEC14	EC 14 Earth Clamp Dry	20
QEC15	EC 15 Earth Clamp Wet	20

Terminal Blocks

- PE material
- Brass insert
- Captive screw



Part Number	Description	Pack Qty
QTB5	5 Amp Terminal Block Strips	10
QTB15	15 Amp Terminal Block Strips	10
QTB30	30 Amp Terminal Block Strips	10

PVC Tapes

General purpose non-migratory plasticised insulation tape supplied in lengths of 20m and 33m with all colours as detailed.

Tested for: Thickness, Tensile Elongation, Adhesion, Adhesion to Backing, Flagging, Corrosive Sulphur, Flame Propagation (CAT 2), Plastic to 31/90 (PVCP), Working Temperature up to 80°C.

- Made from self extinguishing flame retardant PVC
- Manufactured to comply with BS EN 60454-3
- Ideal for electrical binding, colour coding and identification
- UL Approved E244140



Part Number	Colour	Length	Width	Pack Qty
1920B	Black	20METRES	19mm	10 Rolls
1920BL	Blue	20METRES	19mm	10 Rolls
1920BR	Brown	20METRES	19mm	10 Rolls
1920GR	Green	20METRES	19mm	10 Rolls
1920GY	Grey	20METRES	19mm	10 Rolls
1920R	Red	20METRES	19mm	10 Rolls
1920W	White	20METRES	19mm	10 Rolls
1920Y	Yellow	20METRES	19mm	10 Rolls
1920YG	Yell/Grn	20METRES	19mm	10 Rolls

1933B	Black	33METRES	19mm	10 Rolls
1933BL	Blue	33METRES	19mm	10 Rolls
1933BR	Brown	33METRES	19mm	10 Rolls
1933GR	Green	33METRES	19mm	10 Rolls
1933GY	Grey	33METRES	19mm	10 Rolls
1933R	Red	33METRES	19mm	10 Rolls
1933W	White	33METRES	19mm	10 Rolls
1933Y	Yellow	33METRES	19mm	10 Rolls
1933YG	Yell/Grn	33METRES	19mm	10 Rolls

Cable Clips

- Self grip design
- Chemical inertness
- Stress crack resistance
- Thick steel nails prevents snapping
- Long nail for good pull out value
- High grade tough polyethylene for low temperature flexibility



Part Number	Description	Colour	Width	Pack Qty
QRC1	Cable Clip For 2-3mm Round Cable-clear	clear	2-3mm	100
QRC2	Cable clips for 3-5mm Round Cable-clear	clear	3-5mm	100
QRC3	Cable clips for 3-5mm Round Cable-white	white	3-5mm	100
QRC4	Cable clips for 5-7mm Round Cable-black	black	5-7mm	100
QRC5	Cable clips for 5-7mm Round Cable-clear	clear	5-7mm	100
QRC6	Cable clips for 5-7mm Round Cable-white	white	5-7mm	100
QRC7	Cable clips for 7-10mm Round Cable-black	black	7-10mm	100
QRC8	Cable clips for 7-10mm Round Cable-brown	brown	7-10mm	100
QRC9	Cable clips for 7-10mm Round Cable-red	red	7-10mm	100
QRC10	Cable clips for 7-10mm Round Cable-white	white	7-10mm	100
QRC11	Cable clips for 10-14mm Round Cable-black	black	10-14mm	100
QRC12	Cable clips for 10-14mm Round Cable-white	white	10-14mm	100
QRC13	Cable clips for 14-20mm Round Cable-black	black	14-20mm	50
QRC14	Cable clips for 14-20mm Round Cable-white	white	14-20mm	50
QRC15	Cable clips for 18-22mm Round Cable-black	black	18-22mm	50
QRC16	Cable clips for 18-22mm Round Cable-white	white	18-22mm	50
QRC17	Cable clips for 22-26mm Round Cable-black	black	22-26mm	50
QRC18	Cable clips for 22-26mm Round Cable-white	white	22-26mm	50

QFC1	Cable clips for Bellwire-clear	clear	2-4mm	100
QFC2	Cable clips for Speaker Cable-clear	clear	3-5mm	100
QFC3	Cable clips for Sheath Twin Cable-clear	clear	4-6mm	100
QFC4	Cable clips for 1.0 and 1.5mm ² T&E Cable-grey	grey	5-8mm	100
QFC5	Cable clips for 2.5mm ² T&E Cable-grey	grey	6-10mm	100
QFC6	Cable clips for 4-6mm ² T&E Cable-grey	grey	7-14mm	100
QFC7	Cable clips for 10-16mm ² T&E Cable-grey	grey	9-18mm	100
QFWC1	Cable clips for 11x22mm Flat-white for oval conduit	white	11-22mm	100
QFWC4	Cable clips for 5x8mm Flat-white 1-1.5mm ² Twin & Earth	white	5-8mm	100
QFWC5	Cable clips for 6x10mm Flat-white 2-2.5mm ² Twin & Earth	white	6-10mm	100
QDC1	Cable clips for 5x8mm Flat Double-grey for 2 x 1.5 T&E cable	grey	5-8mm	100
QDC2	Cable clips for 6x10mm Flat Double-grey for 2 x 2.5 T&E cable	grey	6-10mm	100
QJ12B	Cable clips 4.0mm Flat for RG59 + 2C and HYCF dual-black	black	4mm	100
QJ12W	Cable clips 4.0mm Flat for RG59 + 2C and HYCF dual-white	grey	4mm	100

Cable Cleats

- Manufactured in high strength polypropylene not polythene
- High impact resistance
- Unaffected by corrosive environments
- Higher mechanical strength than polythene
- High level of resistance to ultra violet light
- Stability down to -35°C and up to 105°C constant



Part Number	Description	Width	Pack Qty
QC10	Cable Cleat 25.4mm	25.4mm	100
QC12	Cable Cleat 30.0mm	30mm	50
QC14	Cable Cleat 35.6mm	35.6mm	50
QC16	Cable Cleat 40.6mm	40.6mm	50
QC18	Cable Cleat 45.7mm	45.7mm	50
QC20	Cable Cleat 50.4mm	50.4mm	20
QC4	Cable Cleat 10.1mm	10.1mm	100
QC5	Cable Cleat 12.7mm	12.7mm	100
QC6	Cable Cleat 15.2mm	15.2mm	100
QC7	Cable Cleat 17.8mm	17.8mm	100
QC8	Cable Cleat 20.3mm	20.3mm	100
QC9	Cable Cleat 22.8mm	22.8mm	100

Lock-Offs Kits



Part Number	Description	Pack Qty
QTAG4	Lock off kit	1
QTAG5	Basic lock off kit	1

Tradesman Tubs



Part Number	Description	Pack Qty
QTT2	Red Plugs and Screws 400 X 1.5 -8 Twin fast + 400 X Red Plugs	1
QTT3	Cavity Fixings and Screws 200	1
QTT4	Cable Clips 400 X 1.0mm T&E + 400 X 2.5mm T&E	1

Wall Plugs



Part Number	Description	Pack Qty
CC-04169	Plastic Wall Plugs Red Pack	100
CC-04173	Plastic Wall Plugs Brown	100
CC-70010	Plastic Wall Plugs Red x 500 Tub	1
CC-70011	Plastic Wall Plugs Brown x 500 Tub	1
CC-70012	Plasterboard Plug x 500 Tub	1
CC-04187	Plasterboard Plugs	96

Frame Fixings



Part Number	Description	Length	Width	Pack Qty
CC-04111	Frame Fixing 8 X 80mm	80mm	8mm	16
CC-04112	Frame Fixing 8 X 100mm	100mm	8mm	16
CC-04113	Frame Fixing 8 X 120mm	120mm	8mm	16

Hammer Fixings



Part Number	Description	Length	Width	Pack Qty
CC-04117	Hammer In Fixing 6 X 40mm	40mm	6mm	16
CC-04118	Hammer In Fixing 6 X 40mm	40mm	6mm	16
CC-04119	Hammer In Fixing 6 X 70mm	70mm	6mm	16
CC-04120	Hammer In Fixing 8 X 80mm	80mm	8mm	16
CC-04121	Hammer In Fixing 8 X 100mm	100mm	8mm	16
CC-04122	Hammer In Fixing 8 X 120mm	120mm	8mm	16

Anchor Bolts



Part Number	Description	Length	Width	Pack Qty
CC-04129	Anchor Bolt M6 X 60mm	60mm	m6	4
CC-04132	Anchor Bolt M8 X 65mm	65mm	m8	4
CC-04133	Anchor Bolt M8 X 80mm	80mm	m8	4
CC-04134	Anchor Bolt M8 X 95mm	95mm	m8	4
CC-04135	Anchor Bolt M10 X 75mm	75mm	m10	4
CC-04136	Anchor Bolt M10 X 90mm	90mm	m10	4
CC-04137	Anchor Bolt M10 X 105mm	105mm	m10	4
CC-04138	Anchor Bolt M10 X 125mm	125mm	m10	4

Projecting Anchor Bolts



Part Number	Description	Length	Width	Pack Qty
CC-04141	Projecting Anchor Bolt M6 X 115mm	115mm	m6	4
CC-04145	Projecting Anchor Bolt M8 X 125mm	125mm	m8	4
CC-04146	Projecting Anchor Bolt M10 X 135mm	135mm	m10	4
CC-04147	Projecting Anchor Bolt M10 X 155mm	155mm	m10	4
CC-04148	Projecting Anchor Bolt M10 X 175mm	175mm	m10	4

Eyebolts



Part Number	Description	Length	Width	Pack Qty
CC-04149	Eyebolt M6	78mm	m6	2
CC-04150	Eyebolt M8	93mm	m8	2

Hook Bolt



Part Number	Description	Length	Width	Pack Qty
CC-04152	Hook Bolt M8	95mm	m8	2

Toggle Fixings



Part Number	Description	Length	Width	Pack Qty
CC-04189	Short Toggle Fixing + Screw	50mm	M5	5
CC-04191	Medium Toggle Fixing + Screw	80mm	M5	5

Self Drive Plug & Screws



Part Number	Description	Length	Width	Pack Qty
CC-04195	Metal Self Drive Plug + Screw	28mm	15mm	12
CC-04197	Nylon Self Drive Plug + Screw	32mm	15mm	12
QCVFIX	Metal Self Drive Plasterboard Screw	28mm	15mm	100

Hollow Wall Anchors



Part Number	Description	Length	Width	Pack Qty
CC-04200	Small Hollow Wall Anchor	50mm	M4	10
CC-04202	Medium Hollow Wall Anchor	45mm	M5	10
CC-04204	Large Hollow Wall Anchor	45mm	M6	10

Spring Toggles



Part Number	Description	Length	Width	Pack Qty
CC-04205	Spring Toggles M5 X 50mm	50mm	M5	5
CC-04208	Spring Toggles M5 X 80mm	80mm	M5	10

Nuts / Washers



Part Number	Description	Width	Pack Qty
QBFNM4	Brass Fullnuts M4	4mm	100
QBWM4	Brass Washers M4	4mm	100

Panhead Screws



Part Number	Description	Length	Width	Pack Qty
QMS4x6	Panhead Machine Screws 4 X 6mm	6mm	4mm	100
QMS4x8	Panhead Machine Screws 4 X 8mm	8mm	4mm	100
QMS4x10	Panhead Machine Screws 4 X 10mm	10mm	4mm	100
QMS4x12	Panhead Machine Screws 4 X 12mm	12mm	4mm	100
QMS4x16	Panhead Machine Screws 4 X 16mm	16mm	4mm	100
QMS4x20	Panhead Machine Screws 4 X 20mm	20mm	4mm	100
QMS4x25	Panhead Machine Screws 4 X 25mm	25mm	4mm	100
QMS4x30	Panhead Machine Screws 4 X 30mm	30mm	4mm	100
QMS4x35	Panhead Machine Screws 4 X 35mm	35mm	4mm	100
QMS4x40	Panhead Machine Screws 4 X 40mm	40mm	4mm	100
QMS4x50	Panhead Machine Screws 4 X 50mm	50mm	4mm	100

Counter Sunk Machine Screws



Part Number	Description	Length	Width	Pack Qty
QRCSM35x25	Raised Counter Sunk Machine Screw M3.5 X 25mm	25mm	3.5mm	100
QRCSM35x35	Raised Counter Sunk Machine Screw M3.5 X 35mm	35mm	3.5mm	100
QRCSM35x40	Raised Counter Sunk Machine Screw M3.5 X 40mm	40mm	3.5mm	100
QRCSM35x50	Raised Counter Sunk Machine Screw M3.5 X 50mm	50mm	3.5mm	100
QRCSM35x75	Raised Counter Sunk Machine Screw M3.5 X 75mm	75mm	3.5mm	100

Twin Thread Screw

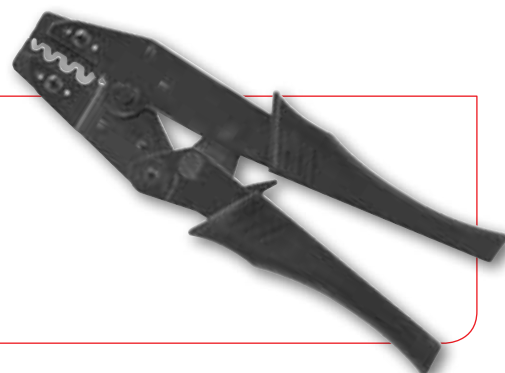


Part Number	Description	Length	Width	Pack Qty
QWS8-075	Twin Thread Counter Sunk Posi BZP 8 X 3/4	0.75"	8mm	200
QWS8-1	Twin Thread Counter Sunk Posi BZP 8 X 1	1"	8mm	200
QWS8-125	Twin Thread Counter Sunk Posi BZP 8 X 1 1/4	1.25"	8mm	200
QWS8-15	Twin Thread Counter Sunk Posi BZP 8 X 1 1/2	1.5"	8mm	200
QWS8-175	Twin Thread Counter Sunk Posi BZP 8 X 1 3/4	1.75"	8mm	200
QWS8-20	Twin Thread Counter Sunk Posi BZP 8 X 2	2"	8mm	200
QWS8-225	Twin Thread Counter Sunk Posi BZP 8 X 2 1/4	2.25"	8mm	200
QWS8-25	Twin Thread Counter Sunk Posi BZP 8 X 2 1/2	2.5"	8mm	200
QWS8-30	Twin Thread Counter Sunk Posi BZP 8 X 3	3"	8mm	200
QWS10-10	Twin Thread Counter Sunk Posi BZP 10 X 1	1"	10mm	200
QWS10-125	Twin Thread Counter Sunk Posi BZP 10 X 1 1/4	1.25"	10mm	200
QWS10-15	Twin Thread Counter Sunk Posi BZP 10 X 1 1/2	1.5"	10mm	200
QWS10-175	Twin Thread Counter Sunk Posi BZP 10 X 1 3/4	1.75"	10mm	200
QWS10-20	Twin Thread Counter Sunk Posi BZP 10 X 2	2"	10mm	200

Ratchets

QHCR1516

Four jaw ratchet tool with controlled calibration suitable for crimping 1.5 to 16mm² copper tube terminals.



QHCR15

Triple jaw ratchet indent tool with controlled calibration suitable for crimping 0.25 to 6mm² insulated terminals.



QHCRF15

Triple jaw ratchet tool with controlled calibration suitable for crimping non insulated male/female disconnect terminals with 'F' crimp configuration.



Tensioning Tool

QTGM1

Standard adjustable metal tensioning tool for cable tie widths from just 2.2mm to 4.8mm.



Crimping Tools

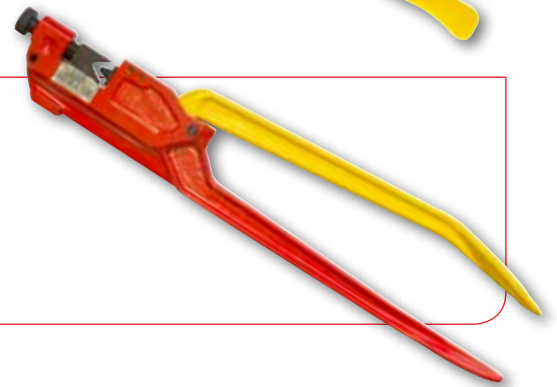
QHC15

General application plier type crimping tool for insulated and uninsulated terminals with a range of .25 to 6mm² non ratchet.



QHC95

Heavy duty indent crimping tool for tube and sheet terminals this tool will crimp 10 to 95mm² with non ratchet screw adjustment.



Cable Cutter

QCC22

Insulated cutter with a double profile blade. Large aperture for cutting copper cable up to 10mm diameter, smaller profile will cut single copper or mild steel wire up to 22mm² cable.

QCC38

Insulated cutter with a double profile blade. Large aperture for cutting copper cable up to 10mm diameter, smaller profile will cut single copper or mild steel wire up to 38mm² cable.



Cable Stripper

QSTRIP

A versatile tool which will strip 0.25 to 6mm² PVC sheathed cable. It also has the facility for cutting and indent crimping cables up to 6mm².





"At Unicrimp the whole business is focused on the customer. We aim to provide market leading levels of service and customer support. Our forward thinking and investment for the future together with our dedicated employees enable a dynamic working environment that provides the platform for continued growth."

Mike Jackson

National Sales Manager

Stock

We understand the importance of stock availability and are committed to having 100% stock availability at our central distribution centre at any given time.

Warehouse / Service

Our centrally located 150,000sq ft Warehouse and Distribution Centre allow us to deliver our products on time every time

Product Development

UNICRIMP products are designed with our customer / the installer very much in mind. Our purpose built facilities and dedicated product development team, based in the UK allow us the flexibility to design and develop these products based on customer feedback and market research, ensuring we are producing a relevant, reliable and quality range of products.



In-House Studio

All marketing support including product literature and point of sale material is designed by our dedicated in-house design studio. This facility enables us to offer bespoke marketing support to our customers.

Distributor Network

Unicrimp distributes exclusively through the electrical wholesale trade. These include Independent Wholesalers, National Wholesale Groups and Buying Consortiums making the products readily available throughout the UK.

Sales Office

Based alongside our distribution facility this busy sales office provides a central point of contact for all customer service requirements.

The professionalism skills and knowledge of our internal sales team enables us to provide the high standard of service that we know our customers expect. Our on-line ordering facility is also managed within this office.

1920B	22
1920BL	22
1920BR	22
1920GR	22
1920GY	22
1920R	22
1920W	22
1920Y	22
1920YG	22
1933B	22
1933BL	22
1933BR	22
1933GR	22
1933GY	22
1933R	22
1933W	22
1933Y	22
1933YG	22

C

CC-04111	25
CC-04112	25
CC-04113	25
CC-04117	25
CC-04118	25
CC-04119	25
CC-04120	25
CC-04121	25
CC-04122	25
CC-04129	26
CC-04132	26
CC-04133	26
CC-04134	26
CC-04135	26
CC-04136	26
CC-04137	26
CC-04138	26
CC-04141	26
CC-04145	26
CC-04146	26
CC-04147	26
CC-04148	26
CC-04149	26
CC-04150	26
CC-04152	26
CC-04169	25
CC-04173	25
CC-04187	25
CC-04189	26
CC-04191	26
CC-04195	27
CC-04197	27
CC-04200	27
CC-04202	27
CC-04204	27
CC-04205	27
CC-04208	27
CC-70010	25
CC-70011	25
CC-70012	25

Q

QAE1W20	17
QAE1W20S	17
QAE1W25	17
QAE1W32	17
QB1-5	10
QB2-5	10
QB4-6	10
QB10	10
QB16	10
QB25	10
QB35	10
QB50	10
QB70	10
QB95	10
QB120	10
QB150	10
QB185	10
QB240	10
QBAB4F	7
QBAB4M	7
QBAB5F	7
QBAB5M	7
QBB	7
QBBL9	7
QBBL18	7
QBF3	7
QBF3N	7
QBF4N	7
QBF5	7
QBF6	7
QBFNM4	27
QBFPO48F5	7
QBFPO48F8	7
QBFPO63F	7
QBP12	7
QBPO48F5	7
QBPO48F8	7
QBPO48M5	7
QBPO48M8	7
QBPO63F	7
QBPO63M	7
QBPO85F	7
QBPOA63	7
QBR3	7
QBR4	7
QBR5	7
QBR6	7
QBR8	7
QBR10	7
QBR12	7
QBR37	7
QBW20	18
QBW20-LSF	18
QBW20S	18
QBW20S-LSF	18
QBW25	18
QBW25-LSF	18
QBW32	18
QBW32-LSF	18
QBW40	18
QBW50	18
QBW50S	18
QBW63	18

QBW63S	18
QBWM4	27
QC4	24
QC5	24
QC6	24
QC7	24
QC8	24
QC9	24
QC10	24
QC12	24
QC14	24
QC16	24
QC18	24
QC20	24
QCC22	30
QCC38	30
QCGM12BLK	20
QCGM12RED	20
QCGM16BLK	20
QCGM16GRY	20
QCGM16RED	20
QCGM16WHT	20
QCGM20BLK	20
QCGM20GRY	20
QCGM20LBLK	20
QCGM20LGRY	20
QCGM20LRED	20
QCGM20LWHT	20
QCGM20RED	20
QCGM20WHT	20
QCGM25BLK	20
QCGM25GRY	20
QCGM25RED	20
QCGM25WHT	20
QCGM32BLK	20
QCGM32GRY	20
QCGM32RED	20
QCGM32WHT	20
QCGM40BLK	20
QCGM40GRY	20
QCGM40WHT	20
QCGM50BLK	20
QCGM50GRY	20
QCGM50WHT	20
QCGM63BLK	20
QCGM63GRY	20
QCGM63WHT	20
QCT10-5	9
QCT10-6	9
QCT10-8	9
QCT10-10	9
QCT10-12	9
QCT16-6	9
QCT16-8	9
QCT16-10	9
QCT16-12	9
QCT25-5	9
QCT25-6	9
QCT25-8	9
QCT25-10	9
QCT25-12	9
QCT35-6	9
QCT35-8	9
QCT35-10	9
QCT35-12	9

QCT50-6	9
QCT50-8	9
QCT50-10	9
QCT50-12	9
QCT70-10	9
QCT70-12	9
QCT70-14	9
QCT95-8	10
QCT95-10	10
QCT95-12	10
QCT95-14	10
QCT95-16	10
QCT120-8	10
QCT120-10	10
QCT120-12	10
QCT120-14	10
QCT120-16	10
QCT150-8	10
QCT150-10	10
QCT150-12	10
QCT150-16	10
QCT150-20	10
QCT185-10	10
QCT185-12	10
QCT185-16	10
QCT185-20	10
QCT240-10	10
QCT240-12	10
QCT240-14	10
QCT240-16	10
QCVFIX	27
QCW20	19
QCW20-LSF	19
QCW20S	19
QCW20S-LSF	19
QCW25	19
QCW25-LSF	19
QCW32	19
QCW32-LSF	19
QCW40	19
QCW50	19
QCW50S	19
QCW63	19
QCW63S	19
QCW75	19
QCW75S	19
QDC1	23
QDC2	23
QEC14	21
QEC15	21
QES2	16
QES3	16
QES4	16
QFC1	23
QFC2	23
QFC3	23
QFC4	23
QFC5	23
QFC6	23
QFC7	23
QFWC1	23
QFWC4	23
QFWC5	23
QGROM20CLOSED	21
QGROM20OPEN	21

QGROM25CLOSED	21	QRFPO48F8	6	QT480XH	13	QTC	15
QGROM25OPEN	21	QRFPO63F	6	QT550H	13	QTE	15
QGROMQ20CLOSED	21	QRP12	5	QT550XH	13	QTG100M	11
QGROMQ20OPEN	21	QRPO28F5	5	QT730XH	13	QTG150I	12
QGROMQ25CLOSED	21	QRPO28F8	5	QT760H	13	QTG200S	12
QGROMQ25OPEN	21	QRPO28M5	5	QT810H	13	QTG300S	12
QHC15	30	QRPO28M8	5	QT880XH	13	QTG370S	12
QHC95	30	QRPO48F5	5	QT1030XH	13	QTGM1	29
QHCR15	29	QRPO48F8	5	QTAG4	24	QTM5	16
QHCR1516	29	QRPO48M5	5	QTAG5	24	QTM11	16
QHCRF15	29	QRPO48M8	5	QTB5	21	QTM17	16
QHSB1	6	QRPO63F	5	QTB12	15	QTM5	16
QHSB2	7	QRPO63M	5	QTB15	21	QTM5	16
QHSB5	8	QRPOA63	5	QTB22	15	QTM5	16
QJ12B	23	QRR3	5	QTB30	21	QTR100M	11
QJ12W	23	QRR4	5	QTB80M	11	QTR150I	12
QMM9	16	QRR5	5	QTB100M	11	QTR200S	12
QMS4x6	28	QRR6	5	QTB120M	11	QTR300S	12
QMS4x8	28	QRR8	5	QTB120S	12	QTR370S	12
QMS4x10	28	QRR10	5	QTB140MP	12	QTS300S	12
QMS4x12	28	QRR12	5	QTB150I	12	QTS370S	12
QMS4x16	28	QRR37	5	QTB150LH	13	QTT2	25
QMS4x20	28	QSST150S	14	QTB160S	12	QTT3	25
QMS4x25	28	QSST200S	14	QTB165M	11	QTT4	25
QMS4x30	28	QSST300LH	14	QTB180IP	12	QTY100M	11
QMS4x35	28	QSST300S	14	QTB190S	12	QTY150I	12
QMS4x40	28	QSST360LH	14	QTB200I	12	QTY200S	12
QMS4x50	28	QSST360S	14	QTB200LH	13	QTY300S	12
QRAB4F	6	QSST520LH	14	QTB200M	11	QTY370S	12
QRAB4M	6	QSST520S	14	QTB200RE	14	QWS8-1	28
QRB	5	QSST840LH	14	QTB200S	12	QWS8-15	28
QRBL10	6	QSTRIP	30	QTB230XH	13	QWS8-20	28
QRBL14	6	QT80M	11	QTB250S	12	QWS8-25	28
QRBL18	6	QT100M	11	QTB280XH	13	QWS8-30	28
QRC1	23	QT120M	11	QTB290I	12	QWS8-075	28
QRC2	23	QT120S	12	QTB300LH	13	QWS8-125	28
QRC3	23	QT140MP	11	QTB300RE	14	QWS8-175	28
QRC4	23	QT150I	12	QTB300S	12	QWS8-225	28
QRC5	23	QT150LH	13	QTB300SP	12	QWS10-10	28
QRC6	23	QT160S	12	QTB370I	12	QWS10-15	28
QRC7	23	QT165M	11	QTB370LH	13	QWS10-20	28
QRC8	23	QT180IP	12	QTB370LHP	13	QWS10-125	28
QRC9	23	QT190S	12	QTB370RE	14	QWS10-175	28
QRC10	23	QT200I	12	QTB370S	12	QYAB5F	8
QRC11	23	QT200LH	13	QTB370SP	12	QYAB5M	8
QRC12	23	QT200M	11	QTB380XH	13	QYB	8
QRC13	23	QT200RE	14	QTB430S	12	QYBL10	8
QRC14	23	QT200S	12	QTB450H	13	QYBL18	8
QRC15	23	QT230XH	13	QTB480XH	13	QYF3N	8
QRC16	23	QT250S	12	QTB550H	13	QYF4N	8
QRC17	23	QT280XH	13	QTB550XH	13	QYF5	8
QRC18	23	QT290I	12	QTB730XH	13	QYF6	8
QRCSM35x25	28	QT300LH	13	QTB760H	13	QYFPO63F	8
QRCSM35x35	28	QT300RE	14	QTB810H	13	QYFPO95F	8
QRCSM35x40	28	QT300S	12	QTB880XH	13	QYP14	8
QRCSM35x50	28	QT300SP	12	QTB1030XH	13	QYPO63F	8
QRCSM35x75	28	QT370I	12	QTB12	15	QYPO63M	8
QRF3	6	QT370LH	13	QTB22	15	QYPO95F	8
QRF3N	6	QT370LHP	13	QTBBC	15	QYPOA63	8
QRF4N	6	QT370RE	14	QTBBC	15	QYR4	8
QRF5	6	QT370S	12	QTBBC	15	QYR5	8
QRF6	6	QT370SP	12	QTBBC	15	QYR6	8
QRFPO28F5	6	QT380XH	13	QTBBC	15	QYR8	8
QRFPO28F8	6	QT430S	12	QTBBC	15	QYR10	8
QRFPO48F5	6	QT450H	13	QTBBC	15	QYR12	8

United Kingdom

UNICRIMP

Unit 3 Scolmore Park, Landsberg,
Lichfield Road Industrial Estate,
Tamworth, Staffordshire
B79 7XB United Kingdom

T: +44 (0)1827 300600
F: +44 (0)1827 300620
E: sales@unicrimp.com

www.unicrimp.com

UNI1000

A Scolmore GROUP
● ● ● ● ● Company