

CLICK® Litehouse



clicklighthouse.ie

PRODUCT CATALOGUE

2019

Welcome to Click® Litehouse...

The Click® Litehouse complete product catalogue introduces many exciting new products to compliment our existing ranges, including superior quality and price competitive Energetic LED lamps, with patented system for smooth dimming functions.

Based in Sandyford, Dublin, and centrally located to the M50 Motorway. All products illustrated in this catalogue are held in our Sandyford Distribution Centre

and are available for nationwide next day delivery.

We supply exclusively via the electrical wholesale trade and nationally through a network of approved stockists.

Our products are the highest quality and have been tested and approved to all relevant BS and EU standards.

We strive to uphold our reputation for excellent customer service, quality products, technical backup and competitive pricing.



CLICK Litehouse

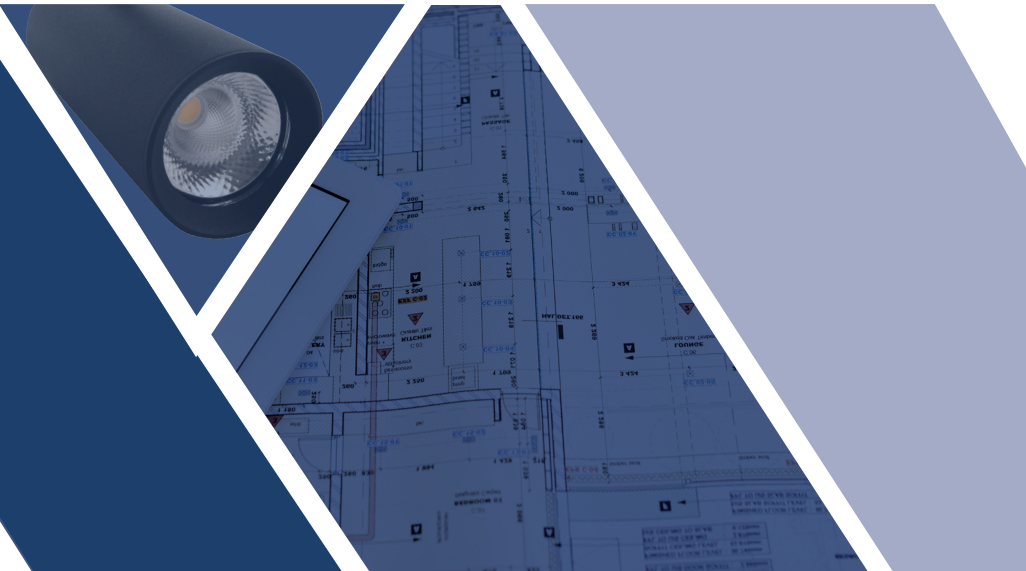
Approvals

All Click® Litehouse products comply with relevant clauses of BS EN 60598 and carry the CE mark.

Quality

We pride ourselves with quality. Long experience of supplying to the OEM industry has taught us the importance of quality components. All items within this catalogue have been sourced and manufactured only with approved and verified components.

Why choose us?



The Click® Litehouse Energetic lamps featured in this catalogue are quality assured and comply with multiple credible and internationally recognised electrical standards. Certified and approved for use in the European market, the safety, quality and usability of our lamps are guaranteed. With energy efficiency at the forefront of the design process, you can be confident that our lamps are the right choice.

Certifications

(EU) NO: 1194/2012



CE Mark

We have checked that these products meet EU safety, health and environmental requirements and proudly display our CE mark as an indicator of our products compliance with EU legislation.



Regulatory Compliance Mark (RCM)

We have taken the necessary steps to have our products comply with the electrical safety and electromagnetic compatibility (EMC) legislative requirements.



Restriction of use of Certain Hazardous Substances (RoHS) in Electrical and Electronic Equipment (EEE)

Our products do not contain more than the agreed levels of: Lead (Pb) cadmium (Cd) mercury (Hg) hexavalent chromium (Cr6+) polybrominated biphenyls (PBB) polybrominated diphenyl ethers (PBDE).



ENERGETIC RANGE:

Energy-related Products (ErP) Directive

Conscious of the impact we have on our environment we have ensured that all of our products are ErP compliant. Improving energy efficiency of our lamps is carefully considered during the design and development stages, and our products aim to reduce greenhouse gas emissions and other adverse environmental impacts throughout their life-cycle.

Online Ordering

The updated site now incorporates a number of improved features that allow users to access new information directly and easily:

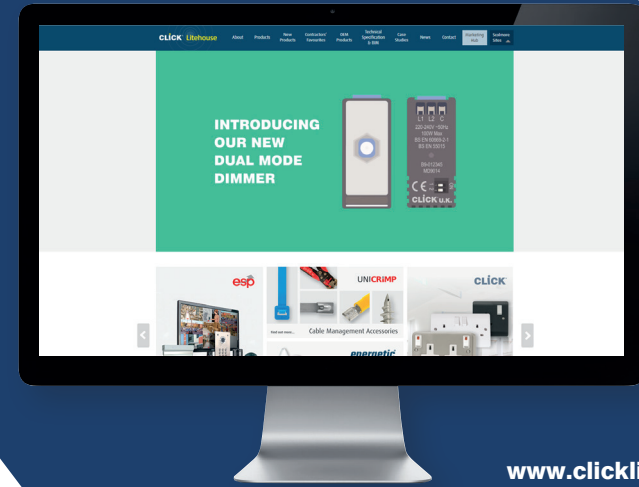
- Ordering 24 hours a day 7 days a week with the ability to check current stock levels as required, this means you are not restricted to ordering during normal office hours
- Access to on-line catalogues will keep you fully updated with the complete product range and provide information on new products as and when they become available
- The order tracking service keeps you up to date with the progress of your shipment
- Managing your administration paper work is now even easier with instant access to reports and essential documents at a click of a button
- A 'quick buy tab' and the ability to store the most common orders for repeated use, adds to the versatility and flexibility of the revised system.

New Website

Visit www.clicklighthouse.ie to see our new website, packed with new features and easier navigation.



www.clicklighthouseonline.ie



www.clicklighthouse.ie

To Register:

E-mail us at sales@clicklighthouse.ie or call our Sales Office on +353 (1) 2811 122 and one of our Sales Representatives will be more than happy to get you set up on-line.

Marketing Support

Click® Litehouse offers a number of exciting marketing support options to aid the sale and presentation of our Energetic lamps...



Energetic Floor Display

Understanding the product codes...

ENERGETIC	TYPE 1	TYPE 2	LUMENS	BASE	DIMMABLE	COLOUR TEMP	MODEL
E	A60 A	CLEAR 1	100 A	E27 1	DIMMABLE D	W/WHITE W	SENSOR S
	A70 B	FROSTED 2	136 B	B22 2	NON DIM N	C/WHITE C	GLASS G
	CANDLE C	FILAMENT 3	196 C	E14 3			
	GOLF MG	FILAMENT/GOLDEN 4	215 D	B15 4			
	G95 G	FILAMENT/FROSTED 5	220 E	GU10 5			
	ST64 S6	FILAMENT/CLEAR 6	230 F	MR16 6			
	TUBES T		250 G				
	S15 S1		270 H				
	G4 G4		275 I				
	G9 G9		345 J				
	R50 R5		350 K				
	R63 R6		360 KA				
	R80 R8		380 L				
	GU10 GU		420 M				
	MR16 MR		450 N				
			470 P				
			500 QA				
			530 Q				
			540 R				
			750 S				
			806 T				
			810 U				
			860 UA				
			920 V				
			1055 W				
			1150 WA				
			1521 X				
			1670 XA				
			1700 Y				
			2400 Z				

Contents...

Energetic Lamps **page 11**

LED Filament Lamps **page 13**

A Bulb Filament	page 14
Reflector Filament Lamps	page 18
Candle Filament Lamps	page 20
Mini Globe Filament Lamps	page 23
Golden ST64 Filament Lamps	page 25
G95 Filament Globe Lamps	page 26

LED Lamps **page 27**

Decorative Lamps	page 28
Photo Cell A60 Lamps	page 29
A Bulb Lamps	page 30
Globe Lamps	page 32
Candle Lamps	page 34
Mini Globe Lamps	page 35
Reflector Lamps	page 36

Lighting **page 41**

Downlights	page 42
Wall/ Ceiling Lighting	page 47
Outdoor Lighting	page 50
Shaver Strip Lights	page 52

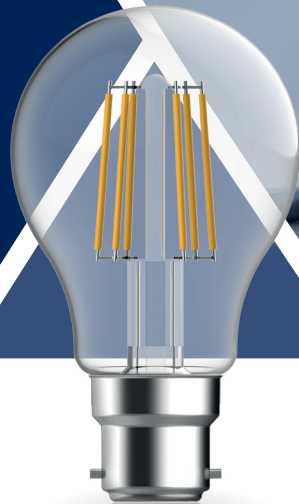
Track Fittings **page 53**

Three Circuit Track	page 54
Circuit Track Accessories	page 56
Three Circuit Tracks	page 60

Lamps and Wiring Accessories **page 61**

Lamps	page 62
Back Boxes	page 64
Pop Up Socket	page 65
Wiring Accessories	page 66

Energetic Lamps



Prepare to be dazzled! by our range of lamps

The perfect replacements for any incandescent lamp and all come in attractive clear packaging.

Energetic Lighting is one of the world's major manufacturers of LED lighting products.

Distinguishing themselves through innovative development in smarter lighting they boast a dynamic research and development team, state-of-the-art manufacturing plants, vertically integrated industrial chain and stringent quality control system.

LED Filament Lamps



Energetic

Energetic



A60 Shape - Glass

Product Code	Watt	Watt Equiv	Lumens	Cap	Length
EA6UA1DCG	8.3W	63W	860lm	E27	104mm
EA6UA2DCG	8.3W	63W	860lm	B22	102mm
EA6WA1DCG	7.7W	80W	1150lm	E27	104mm
EA6WA2DCG	7.7W	80W	1150lm	B22	102mm

Diameter 60mm

Switch 50000

Beam Angle 360°

Colour Temp 4000K

Lifetime 15000hrs

Voltage 220-240V

Hertz 50/60Hz

Ra 80

(EU) NO. 1194/2012

Approvals



Available Base Options (Cap)



A60 Shape - Glass

Diameter 60mm

Switch 50000

Beam Angle 360°

Colour Temp 2700K

Lifetime 15000hrs

Voltage 220-240V

Hertz 50/60Hz

Ra 80

(EU) NO. 1194/2012

Approvals



Product Code	Watt	Watt Equiv	Lumens	Cap	Length
EA6P1DWG	5.1W	40W	470lm	E27	104mm
EA6P2DWG	5.1W	40W	470lm	B22	102mm
EA6T1DWG	8.3W	60W	806lm	E27	104mm
EA6T2DWG	8.3W	60W	806lm	B22	102mm
EA6W1DWG	7.7W	75W	1055lm	E27	104mm
EA6W2DWG	7.7W	75W	1055lm	B22	102mm

Available Base Options (Cap)



Energetic

Energetic



A60 Bulb - Opaque Glass

Diameter 60mm

Diameter 70mm

A70 Bulb - Opaque Glass

Product Code	Watt	Watt Equiv	Lumens	Cap	Length
EA5T1NWG	7W	60W	806lm	E27	104mm
EA5T2NWG	7W	60W	806lm	B22	102mm
EA5W1NWG	8.2W	75W	1055lm	E27	104mm
EA5W2NWG	8.2W	75W	1055lm	B22	102mm

Switch 50000

Switch 50000

Beam Angle 360°

Beam Angle 360°

Colour Temp 2700K

Colour Temp 2700K

Lifetime 15000hrs

Lifetime 15000hrs

Voltage 220-240V

Voltage 220-240V



Product Code	Watt	Watt Equiv	Lumens	Cap	Length
EA5T1DWG	8.3W	60W	806lm	E27	104mm
EA5T2DWG	8.3W	60W	806lm	B22	102mm
EA5W1DWG	8.6W	75W	1055lm	E27	104mm
EA5W2DWG	8.6W	75W	1055lm	B22	102mm

Hertz 50/60Hz

Hertz 50/60Hz

Ra 80

Ra 80

(EU) NO. 1194/2012

(EU) NO. 1194/2012

Available Base Options (Cap)

Approvals



Approvals



Available Base Options (Cap)



Energetic



R63

Product Code	Watt	Watt Equiv	Lumens	Cap	Length
ER66N1DWG	7.5W	60W	450lm	E27	102mm

Diameter **63mm**

Switch **20000**

Beam Angle **360°**

Colour Temp **2700K**

Lifetime **15000hrs**

Voltage **220-240V**

Hertz **50/60Hz**

Ra **80**

(EU) NO. **1194/2012**

Available Base Options (Cap)



Approvals



Energetic



R50

Product Code	Watt	Watt Equiv	Lumens	Cap	Length
ER56H3DWG	4.4W	40W	270lm	E14	85mm

Diameter **50mm**

Switch **20000**

Beam Angle **360°**

Colour Temp **2700K**

Lifetime **15000hrs**

Voltage **220-240V**

Hertz **50/60Hz**

Ra **80**

(EU) NO. **1194/2012**

Approvals

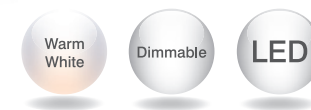


Available Base Options (Cap)



Energetic

Energetic



Candle - Glass

Product Code	Watt	Watt Equiv	Lumens	Cap	Length
EC6QA3DCG	4.8W	42W	500lm	E14	106mm
EC6QA4DCG	4.8W	42W	500lm	B15	104mm
EC6QA1DCG	4.8W	42W	500lm	E27	95mm
EC6QA2DCG	4.8W	42W	500lm	B22	93mm

Diameter 35mm

Switch 50000

Beam Angle 360°

Colour Temp 4000K

Lifetime 15000hrs

Voltage 220-240V

Hertz 50/60Hz

Ra 80

(EU) NO. 1194/2012

Approvals



Available Base Options (Cap)



Diameter 35mm

Switch 50000

Beam Angle 360°

Colour Temp 2700K

Lifetime 15000hrs

Voltage 220-240V

Hertz 50/60Hz

Ra 80

(EU) NO. 1194/2012

Approvals



Candle - Glass

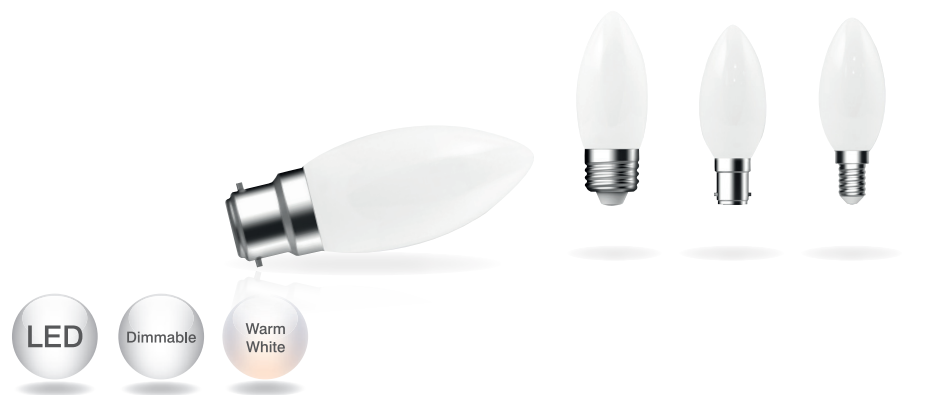
Product Code	Watt	Watt Equiv	Lumens	Cap	Length
EC6P3DWG	4.8W	40W	470lm	E14	106mm
EC6P4DWG	4.8W	40W	470lm	B15	104mm
EC6P1DWG	4.8W	40W	470lm	E27	95mm
EC6P2DWG	4.8W	40W	470lm	B22	93mm

Available Base Options (Cap)



Energetic

Energetic



Candle - Opaque Glass

Product Code	Watt	Watt Equiv	Lumens	Cap	Length
EC5P3DWG	5.4W	40W	470lm	E14	95mm
EC5P4DWG	5.4W	40W	470lm	B15	95mm
EC5P1DWG	5.4W	40W	470lm	E27	96mm
EC5P2DWG	5.4W	40W	470lm	B22	94mm

Diameter	35mm
Switch	50000
Beam Angle	360°
Colour Temp	2700K
Lifetime	15000hrs
Voltage	220-240V
Hertz	50/60Hz
Ra	80
(EU) NO.	1194/2012

Available Base Options (Cap)



Mini Globe - Opaque Glass

Product Code	Watt	Watt Equiv	Lumens	Cap	Length
EMG5P3DWG	5.4W	40W	470lm	E14	80mm
EMG5P4DWG	5.4W	40W	470lm	B15	79mm
EMG5P1DWG	5.4W	40W	470lm	E27	78mm
EMG5P2DWG	5.4W	40W	470lm	B22	76mm

Diameter	45mm
Switch	50000
Beam Angle	360°
Colour Temp	2700K
Lifetime	15000hrs
Voltage	220-240V
Hertz	50/60Hz
Ra	80
(EU) NO.	1194/2012



Available Base Options (Cap)



Energetic



Mini Globe - Glass

Product Code	Watt	Watt Equiv	Lumens	Cap	Length
EMG6P3DWG	4.8W	40W	470lm	E14	91mm
EMG6P4DWG	4.8W	40W	470lm	B15	89mm
EMG6P1DWG	4.8W	40W	470lm	E27	79mm
EMG6P2DWG	4.8W	40W	470lm	B22	77mm

Diameter 45mm

Switch 50000

Beam Angle 360°

Colour Temp 2700K

Lifetime 15000hrs

Voltage 220-240V

Hertz 50/60Hz

Ra 80

(EU) NO. 1194/2012

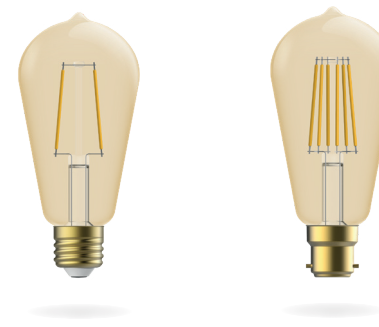
Available Base Options (Cap)



Approvals 



Energetic



ST64 - Glass

Diameter 64mm

Switch 50000

Beam Angle 360°


Lifetime 15000hrs

Voltage 220-240V

Hertz 50/60Hz

Ra 80

(EU) NO. 1194/2012

Approvals 



Product Code	Watt	Watt Equiv	Lumens	Colour Temp	Cap	Length
5167-0003-51	1.7W	15W	100lm	2000K	E27	140mm
5167-0014-51	1.7W	15W	100lm	2000K	B22	138mm
5157-0015-51	6W	60W	750lm	2000K	E27	140mm
5167-0010-51	6W	60W	750lm	2000K	B22	138mm

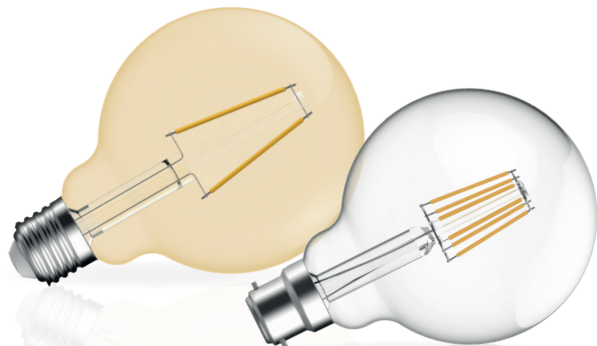
Product Code	Watt	Watt Equiv	Lumens	Colour Temp	Cap	Length
ES64S1DWG	8.3W	51W	660lm	2500K	E27	140mm
ES64S2DWG	8.3W	51W	660lm	2500K	B22	138mm



Available Base Options (Cap)



Energetic



G95 Golden Globe - Glass

Product Code	Watt	Watt Equiv	Lumens	Cap	Colour Temp	Length
5166-0009-51	1.7W	15W	100lm	E27	2000k	137mm
5166-0025-51	1.7W	15W	100lm	B22	2000k	135mm

Diameter 95mm

Beam Angle 360°

Lifetime 15000hrs

Voltage 220-240V

Hertz 50/60Hz

Ra 80


G95 Clear Globe - Glass

Product Code	Watt	Watt Equiv	Lumens	Cap	Colour Temp	Length
5156-0016-51	6W	60W	806lm	E27	2700K	137mm
5166-0021-51	6W	60W	806lm	B22	2700K	135mm

(EU) NO. 1194/2012

Available Base Options (Cap)

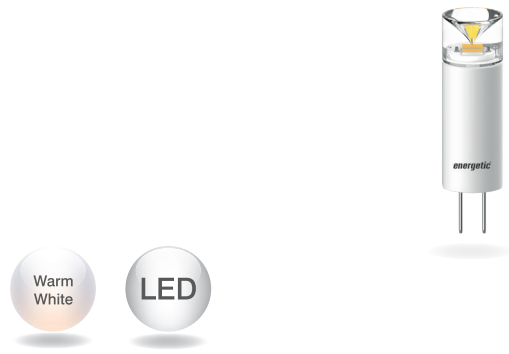


Approvals 



Energetic

Energetic



G4

Product Code	Watt	Watt Equiv	Lumens	Cap	Length
EG41BNW	1.4W	15W	136lm	G4	38mm

Diameter 10mm

Switch 20000

Beam Angle 300°

Colour Temp 3000K

Lifetime 15000hrs

Voltage 12V

Hertz 50/60Hz

Ra 80

(EU) NO. 1194/2012

Available Base Options (Cap)



Approvals



A60 Photo - Cell

Diameter 60mm

Beam Angle 240°

Colour Temp 2700K

Lifetime 15000hrs

Voltage 220-240V

Hertz 50/60Hz

Ra 80

(EU) NO. 1194/2012

Product Code	Watt	Watt Equiv	Lumens	Cap	Length
5151 0137 51	8.5W	60W	806lm	E27	115mm
5161 0036 51	8.5W	60W	806lm	B22	113mm

Approvals



Available Base Options (Cap)



Energetic

Energetic



A60 Bulb - Frosted

Product Code	Watt	Watt Equiv	Lumens	Cap	Beam Angle	Length
EA2P2NW	5.3W	40W	470lm	B22	240°	107mm
EA2P1NW	5.3W	40W	470lm	E27	240°	109mm
EA2T2NW	9.5W	60W	806lm	B22	240°	107mm
EA2T1NW	9.5W	60W	806lm	E27	240°	109mm
EA2W2NW	9.8W	75W	1055lm	B22	240°	107mm
EA2W1NW	9.8W	75W	1055lm	E27	240°	109mm
EA2X2NW	14W	100W	1521lm	B22	200°	107mm
EA2X1NW	14W	100W	1521lm	E27	200°	109mm



Product Code	Watt	Watt Equiv	Lumens	Cap	Beam Angle	Length
EA2XA2NC	14W	108W	1670lm	B22	200°	107mm
EA2XA1NC	14W	108W	1670lm	E27	200°	109mm

Available Base Options (Cap)



Diameter 60mm

Switch 50000

Colour Temp 4000K / 2700K

Lifetime 15000hrs

Voltage 220-240V

Hertz 50/60Hz

Ra 80

(EU) NO. 1194/2012

Approvals



Diameter 60mm

Switch 50000

Colour Temp 2700K

Lifetime 15000hrs

Voltage 220-240V

Hertz 50/60Hz

Ra 80

(EU) NO. 1194/2012

Approvals



A60 Bulb - Frosted

Product Code	Watt	Watt Equiv	Lumens	Cap	Beam Angle	Length
EA2T1DW	8.7W	60W	806lm	E27	240°	109mm
EA2T2DW	8.7W	60W	806lm	B22	240°	107mm
EA2W1DW	9.2W	75W	1055lm	E27	240°	109mm
EA2W2DW	9.2W	75W	1055lm	B22	240°	107mm
EA2X1DW	14.3W	100W	1521lm	E27	200°	109mm
EA2X2DW	14.3W	100W	1521lm	B22	200°	107mm

Available Base Options (Cap)



Energetic

Energetic



G80 Globe

Product Code	Watt	Watt Equiv	Lumens	Cap	Length
5762-9512-51	9.5W	60W	810lm	E27	120mm
5762-9513-51	9.5W	60W	810lm	B22	118mm

G80 Diameter 80mm

G95 Diameter 95mm

Beam Angle 200°

Colour Temp 2700K

Lifetime 15000hrs

Voltage 220-240V

Hertz 50/60Hz

Ra 80


(EU) NO. 1194/2012

G95 Globe

Product Code	Watt	Watt Equiv	Lumens	Cap	Length
5761-1313-51	13W	75W	1055lm	B22	127mm

Available Base Options (Cap)



Approvals 



Diameter 120mm

Beam Angle 240°

Colour Temp 2700K

Lifetime 15000hrs

Voltage 220-240V

Hertz 50/60Hz

Ra 80

(EU) NO. 1194/2012

Approvals 



G120 Globe

Product Code	Watt	Watt Equiv	Lumens	Cap	Length
5763-1312-51	13W	75W	1055lm	E27	168mm
5763-1313-51	13W	75W	1055lm	B22	166mm
5763-1713-51	17W	100W	1521lm	B22	166mm

Available Base Options (Cap)



Energetic



Candle - Frosted

Product Code	Watt	Watt Equiv	Lumens	Cap	Length
EC2P3NW	5.9W	40W	470lm	E14	107mm
EC2P4NW	5.9W	40W	470lm	B15	105mm
EC2P1NW	5.9W	40W	470lm	E27	107mm
EC2P2NW	5.9W	40W	470lm	B22	105mm

Diameter 38mm

Switch 50000

Beam Angle 300°

Colour Temp 2700K

Lifetime 15000hrs

Voltage 220-240V

Hertz 50/60Hz

Ra 80

(EU) NO. 1194/2012

Approvals



Available Base Options (Cap)



Energetic



Diameter 45mm

Switch 50000

Beam Angle 225°

Colour Temp 2700K

Lifetime 15000hrs

Voltage 220-240V

Hertz 50/60Hz

Ra 80

(EU) NO. 1194/2012

Approvals



Mini Globe - Frosted

Product Code	Watt	Watt Equiv	Lumens	Cap	Length
EMG2P3NW	5.9W	40W	470lm	E14	87mm
EMG2P4NW	5.9W	40W	470lm	B15	85mm
EMG2P1NW	5.9W	40W	470lm	E27	84mm
EMG2P2NW	5.9W	40W	470lm	B22	82mm

Available Base Options (Cap)



Energetic



R63

Product Code	Watt	Watt Equiv	Lumens	Beam Angle	Length
ER62J1NW	6.5W	40W	345lm	100°	102mm

Diameter **63mm**

Switch **20000**

Cap **E27**

Colour Temp **2700K**

Lifetime **15000hrs**

Voltage **220-240V**

Hertz **50/60Hz**

Ra **80**

(EU) NO. **1194/2012**

Available Base Options (Cap)



Approvals 



Energetic



R50

Product Code	Watt	Watt Equiv	Lumens	Beam Angle	Length
5742-3311-51	3.3W	25W	250lm	36°	83mm

Diameter **50mm**

Cap **E14**

Colour Temp **2700K**

Lifetime **15000hrs**

Voltage **220-240V**

Hertz **50/60Hz**

Ra **80**

(EU) NO. **1194/2012**

Approvals 



Available Base Options (Cap)



Energetic



GU10 Reflector

Product Code	Watt	Watt Equiv	Lumens	Colour Temp	Length
EGUJ5NW	4.8W	50W	345lm	2700K	55mm
EGUR5NW	7.2W	75W	540lm	2700K	55mm
EGUJ5NC	4.9W	50W	360lm	4000K	55mm



Product Code	Watt	Watt Equiv	Lumens	Colour Temp	Length
EGUJ5DW	4.9W	50W	345lm	2700K	55mm
EGUR5DW	6.7W	75W	540lm	2700K	55mm
EGUJ5DC	4.9W	50W	360lm	4000K	55mm

Available Base Options (Cap)



Diameter 50mm

Switch 50000

Beam Angle 36°

Cap GU10

Lifetime 15000hrs

Voltage 220-240V

Hertz 50/60Hz

Ra 80

(EU) NO. 1194/2012

Approvals



Energetic



GU10 Reflector - Glass

Diameter 50mm

Switch 50000

Beam Angle 36°

Cap GU10

Lifetime 15000hrs

Voltage 220-240V

Hertz 50/60Hz

Ra 80

(EU) NO. 1194/2012

Approvals



Product Code	Watt	Watt Equiv	Lumens	Colour Temp	Length
EGUJ5NWG	4.8W	50W	345lm	2700K	55mm
EGUJ5NCG	4.8W	50W	380lm	4000K	55mm



Product Code	Watt	Watt Equiv	Lumens	Colour Temp	Length
EGUJ5DWG	5W	50W	345lm	2700K	55mm
EGUN5DWG	5.5W	64W	450lm	2700K	55mm
EGUJ5DCG	5W	50W	380lm	4000K	55mm
EGUN5DCG	5.5W	64W	470lm	4000K	55mm

Available Base Options (Cap)



Energetic



MR16 Reflector

Product Code	Watt	Watt Equiv	Lumens	Cap	Length
EMRJ6NW	5.2W	35W	345lm	GU5.3	46mm

Diameter **50mm**

Switch **50000**

Beam Angle **36°**

Colour Temp **2700K**

Lifetime **15000hrs**

Voltage **12V**

Hertz **50/60Hz**

Ra **80**

We recommend the MR16 Lamp be used with an LED Driver.

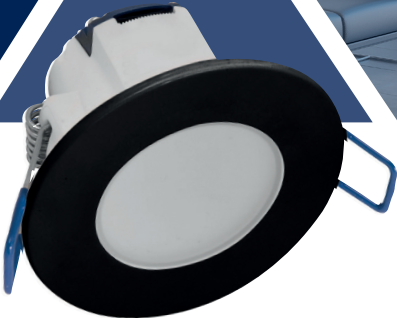
(EU) NO. **1194/2012**

Available Base Options (Cap)

Approvals



Lighting





GZ10 Cast Fixed Downlights

Product Code	Finish
LT-3.100.BB	Brushed Brass
LT-3.100.BC	Brushed Chrome
LT-3.100.CH	Chrome
LT-3.100.WH	White

Wattage	50W
Depth	80mm
Diameter	84mm
Cutout	70mm
Warranty	5 Years
Voltage	240V

Available Finishes



Approvals



GZ10 Cast Adjustable Downlights

Product Code	Finish
LT-3.101.AB	Antique Brass
LT-3.101.BB	Brushed Brass
LT-3.101.BC	Brushed Chrome
LT-3.101.CH	Chrome
LT-3.101.PB	Polished Brass
LT-3.101.WH	White

Wattage	50W
Tilt	15°
Depth	80mm
Diameter	94mm
Cutout	82mm
Warranty	5 Years
Voltage	240V

Approvals



Available Finishes



Lighting



LED Integrated Downlights

Product Code	Colour Temp	Finish	Lumens
LED3500BLK5WD	2700K	Black	350lm
LED3500LCH5WD	2700K	Chrome	350lm
LED3500LCH5CD	4000K	Chrome	390lm
LED3500LSC5WD	2700K	Satin Chrome	390lm
LED3500LSC5CD	4000K	Satin Chrome	390lm
LED3500LWH5WD	2700K	White	390lm
LED3500LWH5CD	4000K	White	390lm

Wattage **5.5W**

Beam Angle **90°**

Cutout **65-76mm**

Lifetime **20000hrs**

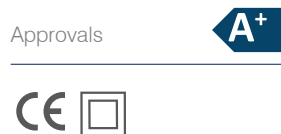
Voltage **220V - 240V**

Complete with 150mm prewired lead.
Low profile of 47mm.

Available Finishes



Approvals



Lighting



IP20 LED Adjustable Downlights

Product Code	Height	Finish
LT6DAB	31.4mm	Antique Brass
LT6DC	31.4mm	Chrome
LT6DSN	31.4mm	Satin Nickel
LT6DW	31.4mm	White

Wattage **6W**

Colour Temp **2700K**

Beam Angle **36°**

Voltage **176-264V**

Cutout **68mm**

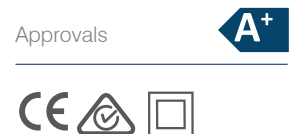
Warranty **3 Years**

Lumens **400lm**

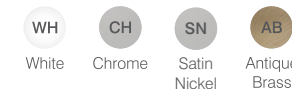
For best dimming performance we recommend using a Click® Litehouse MD9014 Dimmer Module.

Complete with prewired 250mm lead.

Approvals



Available Finishes



Lighting



2-1 Clip on Round LED Panel

Product Code	Finish	Lumens	Cut-Out	Wattage
LTC6W	White	420lm	55-100mm	6W
LTC12W	White	960lm	55-125mm	12W
LTC18W	White	1650lm	55-175mm	18W

Chameleon Panel Lights

Product Code	Description	Finish
LTC6B	Magnetic Trim for LTC6W	Black
LTC6SN	Magnetic Trim for LTC6W	Satin Nickel
LTC12B	Magnetic Trim for LTC12W	Black
LTC12SN	Magnetic Trim for LTC12W	Satin Nickel
LTC18B	Magnetic Trim for LTC18W	Black
LTC18SN	Magnetic Trim for LTC18W	Satin Nickel

Available Finishes



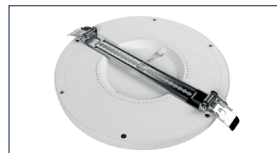
Colour Temp 3000/4000/6000K

Warranty 2 Years

Beam Angle 110°

Voltage 200-240V AC

Back of Fitting



Approvals



Lighting



Spear Adjustable Lights

Product Code	Finish
LT2X9WG	Grey
LT2X9WW	White

Wattage 2 x 9W

Colour Temp 3000K

Voltage 100-240V

Beam Angle 0-110°

Warranty 2 Years

Lifetime 50000hrs

Lumens 2 x 500lm

Approvals



Beam Angle Combinations



Available Finishes



Lighting



Wattage **15W**

Warranty **2 Years**

Depth **100mm**

Diameter **320mm**

Beam Angle **180°**

Lifetime **50000hrs**

Voltage **220-240V**

Hertz **50-60Hz**

Lumens **1000lm**

Finish **White**

Approvals 



Lunar 2 Colour Ceiling Lights

Product Code	Description	Colour Temp
LT1334WH	Standard Ceiling Light	3000K/5000K
LT1336WH	Emergency Ceiling Light	3000K/5000K
LT1335WH	Microwave Ceiling Light Microwave detection range -1- 8m adjustable 30°-150°	3000K/5000K
LT1333WH	Microwave & Emergency Ceiling Light 3 hour emergency duration (on emergency only)	4000K

Instant start

No lamp changing required

10-2000lx adjustable light control

Adjustable time delay 8 Sec - 12 mins

Available Finishes

WH

White

Lighting



Lunar Ceiling Light Bezel

Product Code	Description	Finish
BFC001	Lunar Ceiling Light Bezel	Chrome

Approvals



Available Finishes

CH

Chrome

Outdoor Lighting



SMD LED Garden Light PIR/Solar Panel

Product Code	Description
LT8006	SMD LED Garden Light PIR/Solar Panel

Wattage	6W
Colour Temp	6500K
Lumens	320lm

No mains power supply required

Motion activated, detection range 5-8 meters

Manual over-ride switch

Available Finishes



Approvals



Outdoor Lighting



Outdoor Bulkheads

Wattage (Max)	100W
Lampholder	B22
Voltage	240V
Hertz	50-60Hz

Product Code	Description	Finish
LT-14103BK	Outdoor Polycarbonate Bulkhead	Black
LT-14103WH	Outdoor Polycarbonate Bulkhead	White

Made from PVC

Approvals

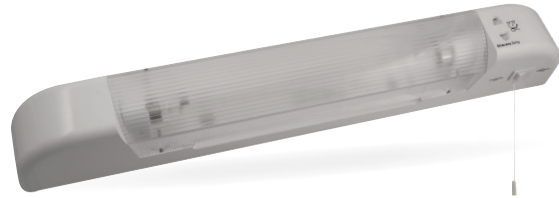


Good protection against ingress of dust and moisture. Complies with BS EN 60598. Suitable for direct mounting on flammable surfaces

Available Finishes



Lighting



Dual Voltage Shaver Strip Light

Product Code	Description	Finish
LT-9.300	Dual Voltage Shaver Strip Light	White

Dimensions 60 x 493 x 70mm

Warranty 2 Years

Lamp Type S15

Colour Temp 2700K

Wattage 60W

Lamp supplied.

Safety Feature: The Lens cover must be securely fitted for the light to switch on.

Available Finishes

Approvals

WH

White



Track Fittings



Track Fittings



Three Circuit Track Fittings

Product Code	Finish	Colour Temp	Lumens
LT001-B-9030-36	Black	3000K	3500lm
LT001-B-9040-36	Black	4000K	3500lm
LT001-W-9030-36	White	3000K	3500lm
LT001-W-9040-36	White	4000K	3500lm

Beam Angle **36°**

Lifetime **50000hrs**

Wattage **35W**

Voltage **220-240V**

Hertz **50/60Hz**

Ra **Ra90**

Warranty **3 Years**

Approvals 



Patent reflector, COB optical design.
Traditional electrical driver box.
3 circuit track connection.
Refer to page 59 for three circuit track layout.

Available Finishes



Track Fittings



Three Circuit Track Fittings

Beam Angle **36°**

Lifetime **50000hrs**

Wattage **20W**

Voltage **220-240V**

Hertz **50/60Hz**

Ra **Ra97**

Warranty **3 Years**

Approvals 



Product Code	Finish	Colour Temp	Lumens
LT002-B-9530-36	Black	3000K	2800lm
LT002-B-9540-36	Black	4000K	2800lm

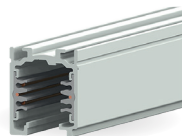
Patent reflector, COB optical design.
No flicker, internal driver.
No need for a gear box.
Refer to page 59 for three circuit track layout.

Available Finishes



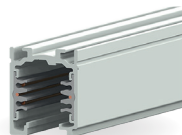
Track Fittings

White Standard Tracks



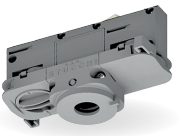
Product Code	Description
9000-1/W-ST	1M Standard Track (RAL 9010)
9000-2/W-ST	2M Standard Track (RAL 9010)
9000-3/W-ST	3M Standard Track (RAL 9010)
9004/W	End Cap

Black Standard Tracks



Product Code	Description
9000-1/B-ST	1M Standard Track (RAL 9005)
9000-2/B-ST	2M Standard Track (RAL 9005)
9000-3/B-ST	3M Standard Track (RAL 9005)
9004/B	End Cap

4 Conductors Adaptor



Product Code	Description	Finish
9009-4/W	4 Conductors Adapter (3 circuit)	White
9009-4/B	4 Conductors Adapter (3 circuit)	Black

6 Conductors Adaptor



Product Code	Description	Finish
9209BK	6 Conductors Dali Adapter (3 circuit)	Black
9209WH	6 Conductors Dali Adapter (3 circuit)	White

Cutting Tool

Product Code	Description
S-9000/T	Cutting Tool for Track Conductors

Available Finishes

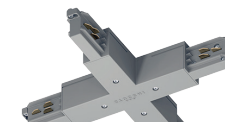
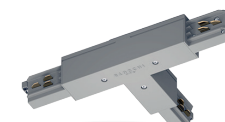
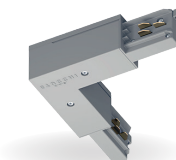
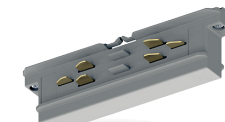
Approvals



Track Fittings

Circuit Track Accessories

Product Code	Description	Finish
9001/W	End Feed Polarity Right/Earthing Left	White
9001/B	End Feed Polarity Right/Earthing Left	Black
9003/W	Joining Connector	White
9003/B	Joining Connector	Black
9011/W	L-Feed Polarity Internal/Earthing External	White
9011/B	L-Feed Polarity Internal/Earthing External	Black
9012/W	L-Feed Polarity External/Earthing Internal	White
9012/B	L-Feed Polarity External/Earthing Internal	Black
9015/W	T-Feed Polarity Internal Left/Earthing External Right	White
9015/B	T-Feed Polarity Internal Left/Earthing External Right	Black
9016/W	T-Feed Polarity Internal Right/Earthing External Left	White
9016/B	T-Feed Polarity Internal Right/Earthing External Left	Black
9017/W	X-Feed	White
9017/B	X-Feed	Black



Compatible with most three circuit track fittings. Refer to page 59 for three circuit track layout.

Approvals

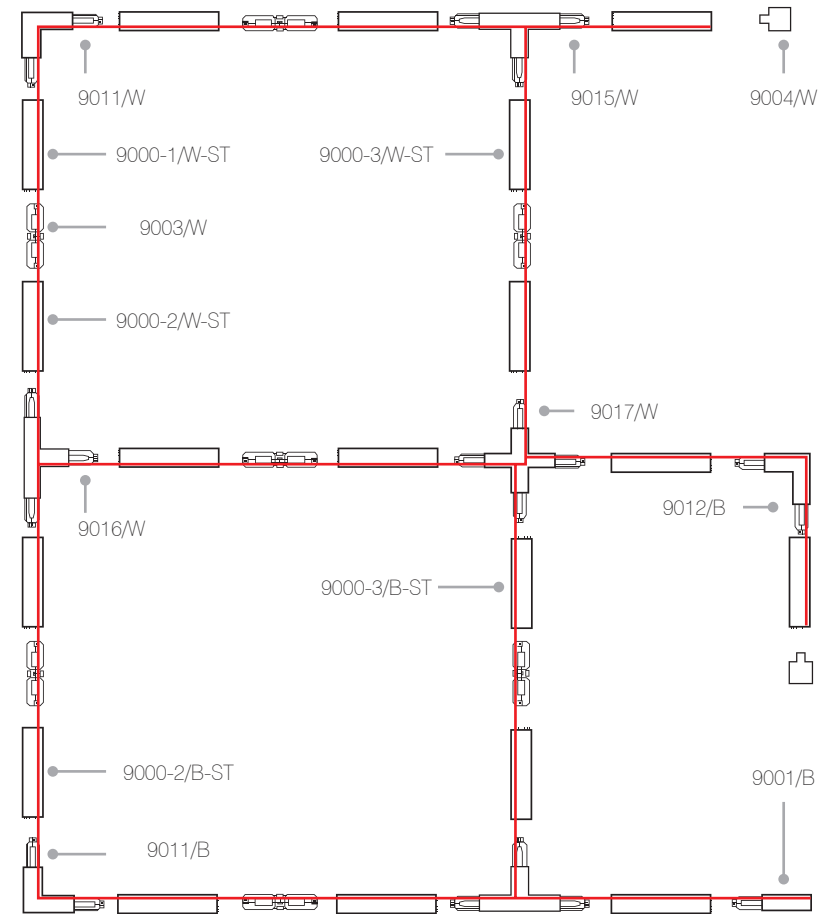
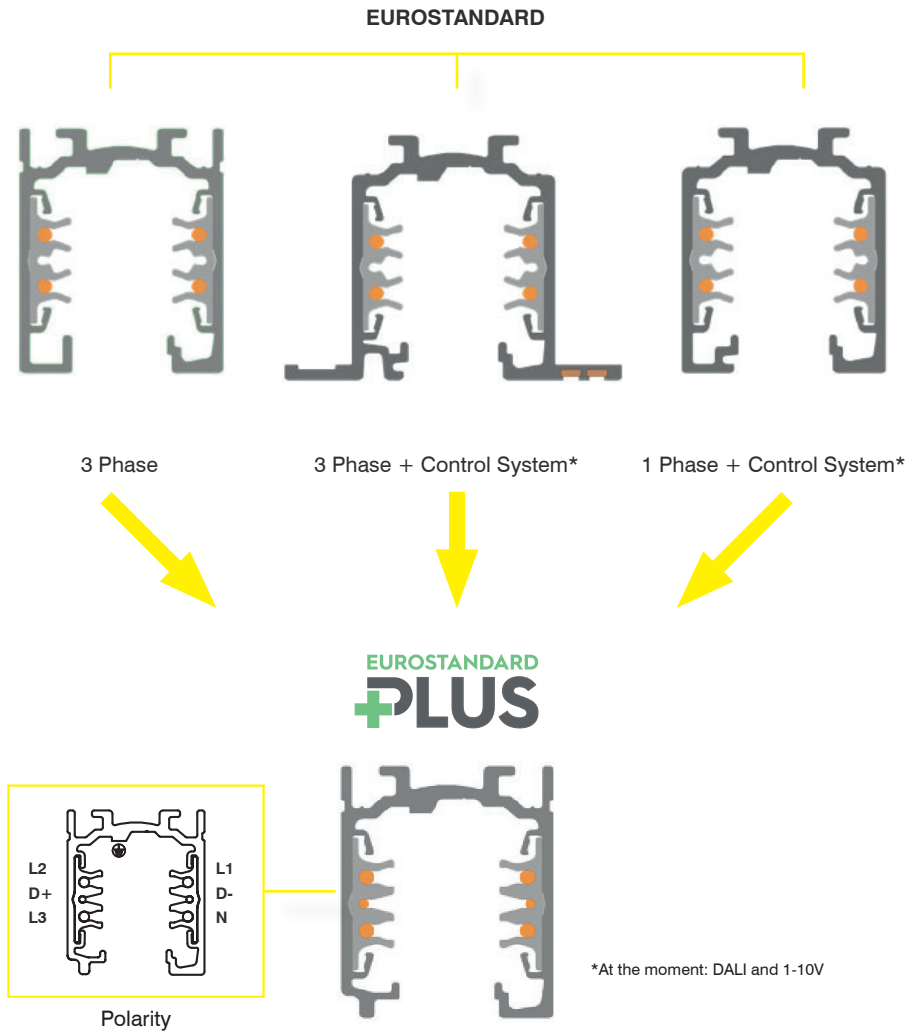
Available Finishes



Track Fittings

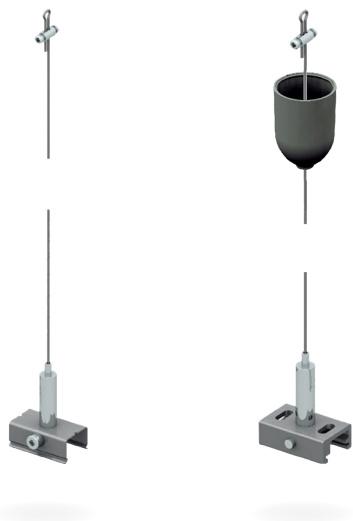
Track Fittings

ONETRACK® system is based on the EUROSTANDARD PLUS® platform that combines the functionalities of all the current systems in the market and makes the upgrade to controllable lighting systems possible at any time. This state-of-the-art platform makes ONETRACK® the best solution for controllable lighting and perfect for application of wireless control, making installation easy at any time.



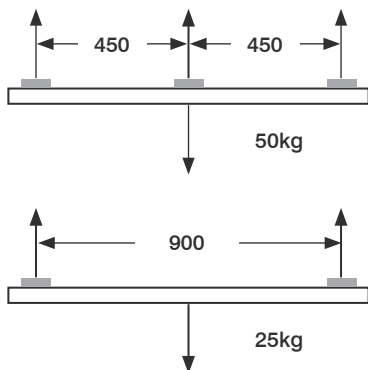
- | | | |
|--|---|--|
| 9000 Standard Track
Available in 3 lengths | 9004 End Cap | 9015 T-Feed
Polarity internal left/earthing external right |
| 9001 End Feed
Polarity right/earthing left | 9011 L-Feed
Polarity internal/earthing external | 9016 T-Feed
Polarity internal right/earthing external left |
| 9003 Jointing Connector | 9012 L-Feed
Polarity external/earthing internal | 9017 X-Feed |

Track Fittings



Load Scheme

Refer to load scheme below to determine number of suspension kits required.

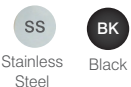


Three Circuit Track Suspension Kits

Product Code	Description	Diameter	Finish
9000-KIT1-1.5	Screw Gripper + Steel Cable + Clamp with Automatic Gripper	Diameter 1.5mm - length 1.5m	Steel
9000-KIT1-3	Screw Gripper + Steel Cable + Clamp with Automatic Gripper	Diameter 1.5mm - length 3m	Steel
9000-KIT3-1.5-B	Screw Gripper + Black Plastic Cup + Steel Cable + Bracket with Automatic Gripper	Diameter 1.5mm - length 1.5m	Black
9000-KIT3-3-B	Screw Gripper + Black Plastic Cup + Steel Cable + Bracket with Automatic Gripper	Diameter 1.5mm - length 3m	Black

Available Finishes

Approvals



Lamps & Wiring Accessories



Lamps



GU10 LED Civilight

Product Code	Wattage	Colour Temp	Lumens
CV5CWL	5W	4000K	350lm
CV5WHL	5W	2700K	350lm



Product Code	Wattage	Colour Temp	Lumens
CV6D	6W	2700K	520lm

Beam Angle **36°**

Cap **GU10**

Lifetime **20000hrs**

Voltage **220-240V**

Hertz **50-60Hz**

Ra **Ra80**

Available Base Options (Cap)



Approvals



Lamps



Colour Temp **4000K**

Lifetime **10000hrs**

2D CFL Lamps

Product Code	Lumens	Cap	Wattage
LT162P	1050lm	2 PIN	16W
LT282P	2050lm	2 PIN	28W
LT164P	1050lm	4 PIN	16W
LT284P	2050lm	4 PIN	28W

Approvals



Available Base Options (Cap)



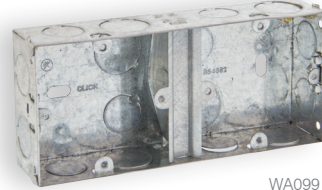
Wiring Accessories



WA095



WA094



WA099

Galvanised Back Boxes

Product Code	Description
WA093	1 gang 25mm Galvanised back box with sliding lug and larger 4,8mm earth terminal
WA094	2 gang 25mm Galvanised back box with sliding lug and larger 4,8mm earth terminal
WA095	1 gang 35mm Galvanised back box with sliding lug and larger 4,8mm earth terminal
WA096	2 gang 35mm Galvanised back box with sliding lug and larger 4,8mm earth terminal
WA097	1 gang 47mm Galvanised back box with sliding lug and larger 4,8mm earth terminal
WA098	2 gang 47mm Galvanised back box with sliding lug and larger 4,8mm earth terminal
WA099	1 + 1 gang 35mm Galvanised back box with sliding lug and larger 4,8mm earth terminal

Approvals



Wiring Accessories



Voltage (USB) **5V DC**

Amps **3 x 13A**

Material **Aluminium / Zinc Alloy**

Dimensions **100 x 424mm**

USB Power Supply **2400mA**

Cutout **92mm**

Warranty **5 Years**

Approvals



BS 1363, EN 60950, EN 55022, EN 61000, EN 60529. Meets all UK and EU Regulations

BS Socket with 2 USB Chargers

Product Code	Description	Finish
LTPOP-SS	BS Socket with 2 USB Chargers	Stainless Steel

IP54 rated in the closed position

Available Finishes



Stainless Steel

Wiring Accessories

Pre-wired Low Voltage Transformer

Product Code	Description
LT-11.101	Pre-wired Low Voltage Transformer



GU10 Lamp holder

Product Code	Description
LT-12.500	GU10 Lamp holder with Insulated Cable



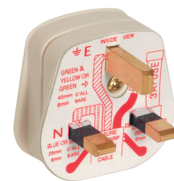
Terminal Strips - EKL Weiss Strip Connectors

Product Code	Description
88716770	Strip Connector
88717774	Strip Connector
88717780	Strip Connector
88717339	Strip Connector



Rewireable Plugs

Product Code	Description	Finish
LT-12.300.WH	Rewireable Plug	White
LT-12.300.BK	Rewireable Plug	Black



Available Finishes



LIGHTING GLOSSARY

A GUIDE TO TERMS USED IN LIGHTING

Wattage (W)

The unit for measuring electrical power. It defines the rate of energy consumption by an electrical device when is in operation. The energy costs of operating a device is calculated as its wattage times the hour of use. In single phase circuits, it is related to volts and amps by the formula: Volts x amps x PF = Watts (Note for AC circuits PF must be included).

Lumens (lm)

A unit of light flow, or luminous flux. The lumen rating of a lamp is a measurement of the total light output of the lamp.

Lux (lx)

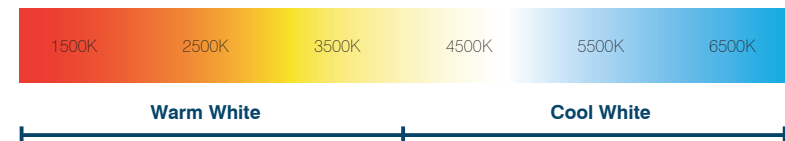
A unit of illuminance or light falling onto a surface. One lux is equal to one lumen per square meter. Ten lux approximately equals one footcandle.

Colour Rendering Index (CRI)

A scale of the effect of a light source on the colour appearance of an object compared to its colour appearance under a referenced light source. Expressed on a scale of 1-100, where 100 indicates no colour shift. A low CRI rating suggests the colours of objects will appear unnatural under that particular light source.

Colour Temperature

The colour temperature is a specification of the colour appearance of a light source, relating the colour to a reference source heated to a particular temperature, measured by the thermal unit Kelvin. The measurement can also be described as the 'warmth' or 'coolness' of a light source. Generally, sources below 3200K are considered warm, while those above 4000K are considered cool sources.



The colour temperature of a light source is measured in degrees Kelvin. Above is a Kelvin temperature chart with examples of how colour temperature is used for different applications.

CLICK[®] Litehouse

18 Corrig Road, Sandyford,
Dublin D18 WV79, Ireland.

T: +353 (1) 2811 122

F: +353 (1) 2811 224

E: sales@clicklighthouse.ie

www.clicklighthouse.ie

MAR2000LIT

Errors and Omissions excluded. Specification is subject to change without notice.